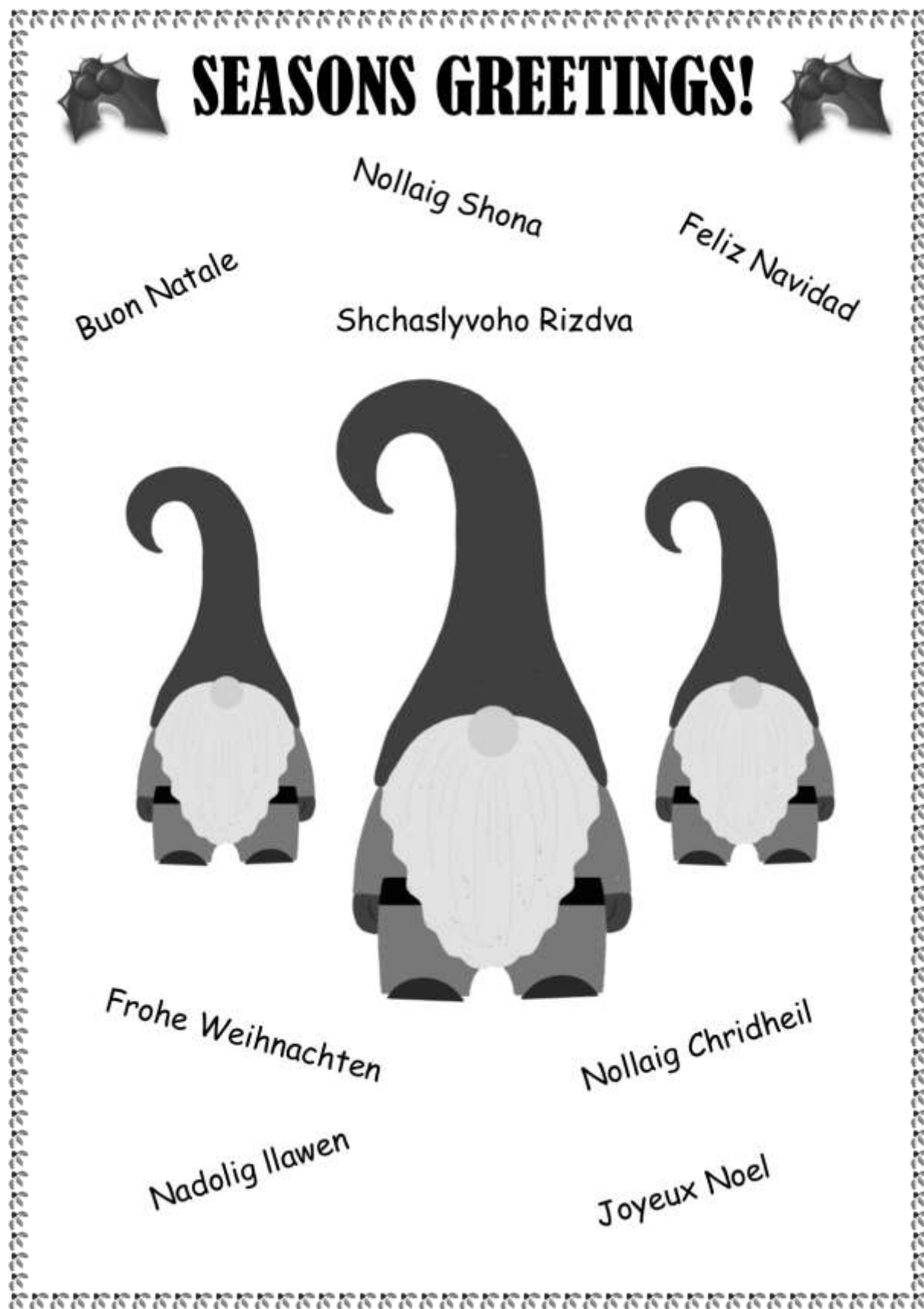


# HAUGHLEY & WETHERDEN PARISH NEWS



DECEMBER/JANUARY 2025/26

# **PALMERS BAKERY**

## **HAUGHLEY**

*Established 1869 – Over 150 Years of Excellence*  
**TRADITIONAL HIGH CLASS ARTISAN  
FAMILY BAKERS & CONFECTIONERS**



The White House & Haughley Village Green – affectionately known as 'The Ark', The White House has been the official Palmer Family Residence for six generations since 1892 and was built in 1527 by Roger Bell and known as Crown Hall

**FRESH BREAD & CONFECTIONERY BAKED DAILY BY CRAFTSMEN USING  
LOCAL INGREDIENTS & BAKED IN ANCIENT BRICK OVENS**



**01449 673286**



*The Village Green~ Haughley*

**Largest Stockist of Tiptree Jams & Marmalades in East Anglia.**

**Suffolk Honey, Free Range Eggs, Groceries & Local Produce.**

**Freshly Made Sandwiches & Filled Rolls - Hot Drinks & Bacon Rolls**

*Also at Stowmarket, Woolpit, Stanton and*

*Brett's Bakery Needham Market & Freshfills of Claydon*

*Seven Generations of Baking, Tradition & Service for Over 150 years  
Through the Reigns of Seven Monarchs*



**"MERRY CHRISTMAS & A HAPPY NEW YEAR"**





## DATES FOR THE DIARY - 2025

### DECEMBER

|          |   |         |
|----------|---|---------|
| Sat 6th  | Community Christmas Café, Haughley Village Hall | 10.00am |
| Sat 6th  | *Wetherden Christmas Market                     | 10.00am |
| Sat 6th  | *Film Nights: "Mr Burton" Haughley Village Hall | 7.00pm  |
| Sun 7th  | *Carol Service, St Mary's, Wetherden            | 6.30pm  |
| Tues 9th | Bingo, Haughley Pavilion                        | 7.00pm  |

## 2026

### JANUARY

|           |  |         |
|-----------|--|---------|
| Fri 2nd   | *Quiz Nights, Wetherden Village Hall                               | 7.30pm  |
| Sat 3rd   | *Community Café, Haughley Village Hall                             | 10.00am |
| Sat 3rd   | *Film Nights: "The Ballad of Wallis Island", Haughley Village Hall | 7.00pm  |
| Sat 10th  | *An Evening with Elvis" with Andy Otley - HUFC, Haughley Pavilion  | 7.15pm  |
| Tues 13th | Bingo, Haughley Pavilion   | 7.00pm  |
| Wed 14th  | *Singing for Wellbeing, Haughley Village Hall                      | 7.30pm  |
| Sat 24th  | * HATS Quiz Night, Haughley Village Hall                           | 7.30pm  |
| Sun 25th  | *Haughley Hoofers, taster session, Haughley Village Hall           | 2.30pm  |
| Wed 28th  | *Singing for Wellbeing, Haughley Village Hall                      | 7.30pm  |
| Fri 30th  | *Quiz Night, Wetherden Village Hall                                | 7.30pm  |
| Sat 31st  | *Quiz Night, Haughley Pavilion                                     | 7.00pm  |

### FEBRUARY

|                     |  |                                    |
|---------------------|--|------------------------------------|
| Sat 7th             | *Community Café, Haughley Village Hall                       | 10.00am                            |
| Sat 7th             | *Film Nights: "The Roses", Haughley Village Hall             | 7.00pm                             |
| Wed 11th            | *Singing for Wellbeing, Haughley Village Hall                | 7.30pm                             |
| Fri 20th & Sat 21st | *HATS Panto, Goldilocks & the 3 Bears, Haughley Village Hall | 2.00pm & 7.30pm<br>2.00pm & 7.30pm |
| Wed 25th            | *Singing for Wellbeing, Haughley Village Hall                | 7.30pm                             |
| Fri 27th            | *Quiz Night, Wetherden Village Hall                          | 7.30pm                             |

### MARCH

|          |   |
|----------|---|
| Sat 28th | *Glam Rock Disco, Haughley Village Hall, more details to follow |
|----------|---|

### MAY

|         |  |
|---------|--|
| Sat 9th | HUFC - St Elizabeth Hospice Charity day - more details to follow |
| Sat 9th | Quiz Night, Haughley Village Hall, more details to follow        |

### JUNE

|                     |                       |
|---------------------|-----------------------|
| Sat 20th & Sun 21st | Haughley Open Gardens |
|---------------------|-----------------------|

\* See poster for further details





**COMMUNITY CAFÉ**



## **CHRISTMAS COMMUNITY CAFÉ**

**Saturday 6<sup>th</sup> December 2025**

**Community Café – 3<sup>rd</sup> January 2026**

\*\*\*\*\*

**‘Coffee & Chat’ at the Green Room**

**Mondays from 10am-12noon**

**\*Closed 29<sup>th</sup> Dec 2025**

\*\*\*\*\*

## **Dates for your diary:-**

**GLAM ROCK DISCO – March 28<sup>th</sup> 2026**

**Spring Quiz & Ploughmans Supper 9<sup>th</sup> May 2026**

**FILM NIGHTS - Doors 7pm for 7.30pm start**

**Admission £5 including refreshments**

**Saturday 6<sup>th</sup> December** - ‘Mr Burton’ based on the true story of how the son of a miner became one of the worlds greatest actors Richard Burton, with the help of an unlikely mentor. Starring Toby Jones, Lesley Manville and Harry Lawtey.

**Saturday 3<sup>rd</sup> January** – ‘The Ballad of Wallis Island’ 2025 British comedy-drama starring Carey Mulligan and Tom Basden as a folk duo who reunite to perform for a wealthy fan (Tim Key) on a remote Welsh island.

**Saturday 7<sup>th</sup> February**- ‘The Roses’ starring Benedict Cumberbatch and Olivia Colman as a successful couple whose picture-perfect marriage begins to fall apart. Satirical black comedy reimagining of the 1989 film ‘The War of the Roses’.

**\*To find out more about ‘What’s On’ at Haughley Village Hall visit our webpage at [Haughley.org.uk](http://Haughley.org.uk)**

# HAUGHLEY VILLAGE HALL

## CHRISTMAS COMMUNITY CAFÉ



**Saturday 6th December**  
**10am-1pm**

Including a special performance by  
Haughley Singing for Wellbeing Group who will be  
singing a selection of well known festive songs  
between 11-11.30am

Join us for our Festive Community Café  
with Mulled Wine and Mince Pies as well as our usual fare.  
We also have a variety of stalls selling gifts for all.

### COME AND JOIN US!

**For more information contact :**

Lindsey Philpot : 01449 675703/07765886690

Lynne Mahon : 01449 674085/07941116240



### HAUGHLEY SINGING FOR WELLBEING

Beat the January blues and come and join  
us for an uplifting sing song:

Our next session dates are:

January 14th and 28th

February 11th and 25th

7.30 pm start in the

Village Hall Green room

Bring a drink and £5 cash per session

Wishing all our singers

A MERRY CHRISTMAS AND A HAPPY AND  
HEALTHY NEW YEAR

Elaine, Isobel and Lynn



For more information contact:

Lynn: 07979832980

or email: elainelynnHSW@gmail.com

**WE LOOK FORWARD TO SEEING YOU!**



### HAUGHLEY PARISH IN BLOOM Autumn 2025 Parishioners Update

Just to update you.....

All the planters have now been planted with Autumn/Winter plants & Spring bulbs. We have also planted a further 1,600+ daffodil bulbs around planter areas & verges within the Parish. We are hoping for a good 'yellow' show of daffodils in the Spring! We envisage further daffodil bulbs to be planted next Autumn to reach even more areas of the Parish.

Unfortunately, one barrel planter has seen better days and therefore has been removed from its site and the Haughley Parish In Bloom programme currently. It is our intention to monitor the older wooden planters and hopefully they can at some time in the future be replaced.

We would like to thank two new volunteers Maggie & Debbie who helped us with dismantling, tidying & general maintenance of planters removing Summer plants replacing with Autumn/Winter/Spring plants & bulbs. We would like to welcome them both to the group.

Thank you for the continued support of our Haughley Parish In Bloom volunteers, you are all so very much appreciated.

Alison & Yvonne

**Haughley Parish Councillors &  
Haughley Parish In Bloom Coordinators**

Email: alison.pepper@haughtleypc.co.uk &  
yvonne.tricker@haughtleypc.co.uk

# St Mary's Church, WETHERDEN

During December we are supporting  
**St Nicholas Hospice & The Children's Society**



The Children's  
Society

There will be a collection during our  
**CAROL SERVICE**  
**6.30 pm on Sunday 7 December**  
for  
**St Nicholas Hospice**

The collection at our  
**CHRISTINGLE SERVICE,**  
**4 pm on Sunday 21 December**  
will go to support the work of  
**The Children's Society**

## WETHERDEN VILLAGE HALL



There were just under 7 tables in play, at our Whist Drive held on Friday 14<sup>th</sup> November.

Everyone seemed to enjoy the afternoon a great deal, and next on the cards will be our special Christmas Whist Drive to be held on Friday 12<sup>th</sup> December at 2pm!

Why not come along???? You will be sure of a warm welcome!"

## CAN YOU HELP?

Gardening help needed in Wetherden. Roughly 2 hours a week, more in spring/summer.  
Phone Tony on  
**07784095225**

## REMEMBER



The copy deadline for the February 2026 issue is:

**Wednesday, January 21 2026**

Submit to:  
The Editor, Oulton Cottage,  
The Folly, Haughley  
or (preferably) by email:  
[haughleynews@btinternet.com](mailto:haughleynews@btinternet.com)

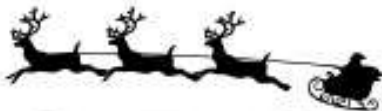
**WETHERDEN**

# **CHRISTMAS**

## **6 DEC 2025**

### **CHRISTMAS MARKET AT WETHERDEN VILLAGE HALL**

**LOCAL CRAFTS,  
FESTIVE GIFTS &  
DECORATIONS  
DOORS OPEN 10AM**



**HAUGHLEY HOOTERS  
BRASS BAND  
CHRISTMAS  
CAROLS/MUSIC OUTSIDE  
WETHERDEN VILLAGE  
HALL IN THE AFTERNOON**

### **SANTA SEARCH AT WETHERDEN BAPTIST CHURCH**

**HELP SANTA FIND HIS  
GIFTS FOLLOW CLUES  
AROUND THE VILLAGE &  
GET A CHOCOLATE  
TREAT AT THE END.  
HOT & COLD DRINKS.  
CAKES & CRAFT MAKING**

**10AM-12PM  
£1.50 PER  
CHILD**





## HAUGHLEY HOOFERS CLOG DANCERS



Invite you to join them for a  
free taster session

On

**SUNDAY JANUARY 25TH 2026**

**2.30 - 4.30pm**

**Haughley Village Hall**

**ALL WELCOME!**

For further details contact:

Gill Brett  
01449 673518

## St Mary's Church Wetherden

Ann Cooke cordially invites you all to

A



Coffee Morning

on

**Thursday 29<sup>th</sup> January**

from

**10.30am to noon**

at

**Barleyfields, Wetherden**

There will be tea, coffee & biscuits  
a bring-and-buy table, books & a raffle.  
Everybody is welcome: the more the merrier.



Like us on Facebook - Wetherden Church

## ACKNOWLEDGEMENT

**Suffolk Historic Churches Ride & Stride** - A big thank you to those who cycled, those who sponsored participants, those who manned St Mary's Church Haughley, and thank you also to Haughley Choir who sang at four of our local churches on the day.

The money raised through the event is split between the Suffolk Historic Churches Trust and St Mary's Haughley.

The total amount raised was an excellent £712. *David Fleetwood (Ride & Stride Organiser for St Mary's Haughley)*

## ELMSWELL GARDEN CLUB

At our latest meeting, we were joined by Chris Wiley, a local plantsman who founded the Sustainable Plant Store in 2022 and also coordinates Bury in Bloom. Chris shared his passion for snowdrops and he has over 1000 cultivated varieties in his personal collection.



Galanthus is the Latin name for the snowdrop and there are currently over 3000 known cultivated varieties and surprisingly they have a huge flowering period with some flowering as early as November with the later ones starting in March. Snowdrops can be planted as bulbs now or 'in the green' (in flower/with growth) in February or March. Chris shared some of his varieties with the group and the most popular one was 'Grumpy', pictured. This cultivar was discovered in a garden in Cambridge about 20 years ago. Snowdrops have had a recent resurgence in popularity with some of the rarer ones selling for hundreds of pounds per bulb!

Chris sells snowdrops as well as perennials, trees other bulbs and gifts online through his store [sustainableplantstore.com](https://sustainableplantstore.com) and if you do fancy one of those rare cultivars then now is the time to treat yourself to an early Christmas present.

Our last meeting of the year was in November and we do not meet again until February. The Committee are busy finalising next years programme of speakers and visits. More details to follow over the winter months.

For Information

contact [elmswellgadmin@btinternet.com](mailto:elmswellgadmin@btinternet.com)  
or Wendy on 07748442951



??

H.A.T.S invites you to



**A FUN Quiz night  
for all the family**

**"OH NO it ISN'T"**

**"Oh YES it  
QUIZ"**

**Saturday 24th January**

**at  
HAUGHLEY VILLAGE HALL**

**DOORS OPEN 7pm for 7.30pm start  
£5 per person maximum teams of 6**

**To book tickets call 07746231114  
or scan the QR code to book online**



**Funds go to the 2026 Haughley Pantomime**

??



**Chairman:** Mr Tim Hart  
**Secretary:** Vacant

**Vice Chair :** Mrs M Buttle  
**Email:** [acsargent48@gmail.com](mailto:acsargent48@gmail.com)

---

Every year the residents of Haughley and surrounding areas come out in force to remember the fallen; this year was no exception. The branch gathered at the village post office with members of the village, Haughley and Wetherden Scouts and explorers with representatives of Haughley Youth Football club and pre-school. Scouse as he is affectionately known led the smart walk from the post office, past the revamped war memorial and into the church where we were met by Rev Andy Buttress. The two minute silence was signalled by the last post and reveille. Rev Andy gave a short meaningful sermon; notably about Douglas Bader. To engage with the children Rev Andy and some children made paper planes.

Like each year, a legion member called out each fallen soldier's name, 41 in total from the village where the beavers and scouts from the village laid a poppy to remember them followed by an extinguish of a candle.

Following the service inside the church everybody gathered around the war memorial for the laying of wreaths and prayers. Afterwards 29 members of the branch went to the Stag Cafe for lunch.

On behalf of the branch and village I would like to extend my thanks to our Vice chair Mrs M Buttle for organising such a heartfelt remembrance service for 2025, our dedicated Poppy appeal collectors and organiser, Mr T Hart.

The current total for the Poppy Appeal in Haughley for 2025/2026 is £2,800, so thank you for your support.

We would like to take this opportunity to thank everyone for their support in 2025 and wish you all a very merry Christmas and a happy new year.

Fancy becoming a member? Then contact Ashley on [acsargent48@gmail.com](mailto:acsargent48@gmail.com).

All branch socials are held on the second Thursday of each month in the Maxwell room next to the post office.

## **Socials 2025**

11th December - Branch social

\*All socials are held in the Maxwell Room (next to the post office) from 7.30pm.

To view our full calendar of events go to our website:

**[www.britishlegion.org/branches/Haughley](http://www.britishlegion.org/branches/Haughley)** Or search

**[Haughley Royal British Legion](#)**

**[www.thehaughleywarmemorial.wordpress.com](http://www.thehaughleywarmemorial.wordpress.com)**

**HAUGHLEY UNITED FOOTBALL CLUB  
PRESENTS**

**"AN EVENING WITH ELVIS"**

With Andy Otley



**Saturday, January 10 2026**

£5 per ticket - which can be purchased from Post Office  
Bar open from 7.15pm, Bar is card only

Come and support your local football club and have  
a great night out!

Ron Crascall Pavilion, Green Road, Haughley IP14 3RA

For queries contact: Colin: 07708062435



*The JUBILEE LADIES CHOIR  
Present*

**A CHRISTMAS CONCERT**

Come and enjoy lots of Christmas songs,  
old and new  
From well loved traditional to Gospel and a  
Holiday Tango!

**Saturday 6<sup>th</sup> December  
7.30pm**

Stowmarket United Reformed Church  
Tickets include mulled wine and mince pie  
£8 on the door (cash only please)  
Festive prize draw during the interval



**DATE FOR YOUR DIARY**

**HAUGHLEY VILLAGE HALL**

**IS HOLDING  
A  
GLAM ROCK DISCO  
ON  
SATURDAY  
28<sup>th</sup> MARCH 2026  
(More details to follow)**



# HAUGHLEY PLAYING FIELD AND PAVILION NEWS

King George's Field, Haughley charity No. 304761

## **Pavilion regeneration project –** Some good news this month

Howdens have confirmed that we have been successful in obtaining a grant for the kitchen and they will be providing us with a new kitchen and new white goods for the kitchen (fridge freezer, cooker etc)

We have also been successful with our application for a Community Development Grant. Mid Suffolk District Council will provide the funding for us to repair the scout hut roof and replace the flooring in the scout hut, repair the function room window, fit a new main door to the pavilion and do general repairs and maintenance to the external doors and windows.

The architect has completed an initial draft design for the pavilion. See image on next page.

We are continuing to work on obtaining funding from the Mid Suffolk District Council CIL team and Sports Infrastructure Grant.

**CUB Leader/s needed.** Our Cub section is going to have to close after Christmas until a new leader can be found. If you know anyone that would consider stepping into this role, please do contact Richard Stacy.

**December 50/50 Draw –** This will be held on the 29<sup>th</sup> November 2025 at the Christmas lights switch on. First prize £100.00 Second prize £30.00 Third Prize £20.00 Fourth prize £10.00. **Christmas Raffle –** We are selling raffle tickets for the grand draw at the Christmas Tree lights switch on event on 29<sup>th</sup> November 2025. First Prize £100, other prizes will be Hampers, Vouchers, Alcohol etc. They will be available from Playing Field reps and Haughley Post Office. £1 a ticket. We are also selling mulled wine & mini mince pies at the event. Hope to see you there.

**Quiz Night 31<sup>st</sup> January 2026 – see separate advertisement for details.**

## **CHRISTMAS SHOPPING ONLINE - THE PERFECT OPPORTUNITY TO SUPPORT US WITH NO COST TO YOU.**

**<https://www.easyfundraising.org.uk/causes/kinggeorgefieldhaughley/>**

Or go to [www.easyfundraising.org.uk](https://www.easyfundraising.org.uk) and select King George's Field, Haughley as your chosen charity.

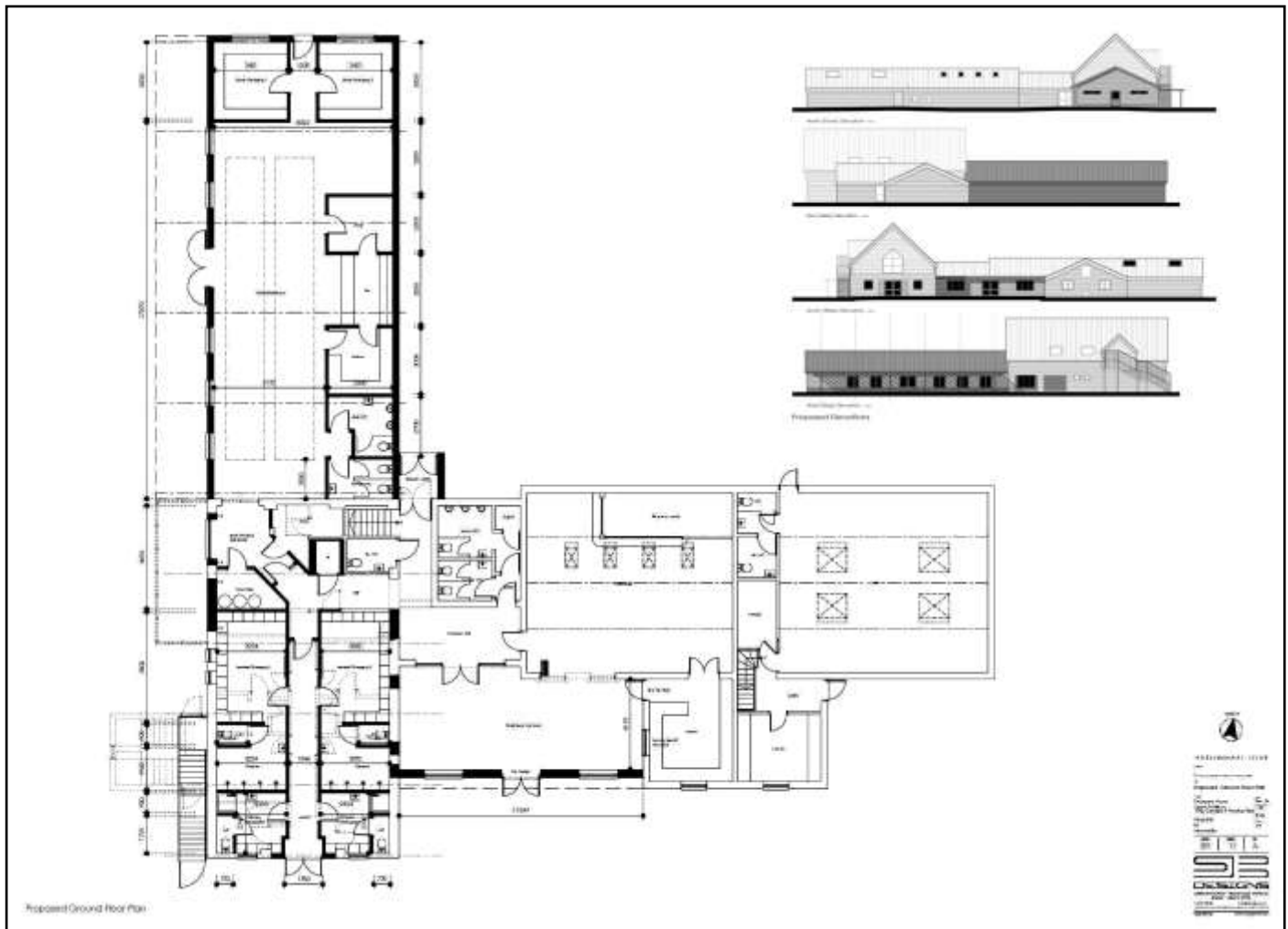
**DOG MESS** on the field. This is really causing a problem for matches. Dogs must be kept on a lead and poo removed. Please avoid allowing dogs to poo in the main playing areas.

## **Advertising board at the entrance to the Ron Crascall pavilion.**

If you would like to advertise your business, please contact us via the parish clerk. Clerk@haughleypc.co.uk. The charge will be £250 a year for an A5 size advert, money raised will help the upkeep of the Pavilion, playing field and equipment.

## **Clubs and Regular activities at the Playing Field & Pavilion**

- **Indoor Bowls Monday afternoons 2-4pm October to March**
- **Yoga – Bethany** serenityyogabethany@outlook.com **Wednesdays 9.30-10.30am** Upstairs function room.
- **Bingo:** Every second Tuesday of the month, 7pm for 7.30pm eyes down. Upcoming dates: 9<sup>th</sup> December 2025, 13<sup>th</sup> January, 10<sup>th</sup> February, 10<sup>th</sup> March 2026.



## Club Contacts

- All club contact details are in directory
- Thirza Shaw, Chairman & 50/50 Club Administrator, Email [trtinker@aol.com](mailto:trtinker@aol.com) or [Thirza.shaw@haughleypc.co.uk](mailto:Thirza.shaw@haughleypc.co.uk) Phone 07786375441

**Dogs are welcome at the playing field. Please keep them on their leads and pick up your dog's poo.**

## Ron Crascall Pavilion, King George's Field, Haughley

### There are three rooms for hire at the Pavilion

- Upstairs Function room
- 14m x 8m approx with 10 tables & 60 chairs
- Contact Thirza Shaw – [trtinker@aol.com](mailto:trtinker@aol.com) or 07786 375441
- Access to kitchen facilities on the Haughley Football club bar room ground floor
- Contact Ian Wilkinson 01449 773399 or Lee Forsdyke 07472902302
- Access to kitchen facilities
- Scouts Hall or folding table & chairs – Richard Stacy 01449 673311.

## DISTRICT COUNCILLORS' REPORT - NOVEMBER 2025

### **Eve Balfour House**

Mid Suffolk District Council will shortly be submitting a planning application for the use of Eve Balfour House as temporary accommodation. This accommodation is intended to support residents within the Mid Suffolk district who are homeless or at risk of homelessness.

Homelessness applications are only accepted from individuals who meet the five statutory tests of homelessness under the Housing Act 1996 (as amended). This ensures that temporary accommodation at Eve Balfour House will be provided solely to those who are legally eligible for housing assistance.

The accommodation is allocated to people on the Mid Suffolk housing register who have either become homeless or are likely to be so within the next two months. The average stay is around four months before residents move on to longer-term housing.

There have been suggestions that Eve Balfour House might be used for asylum seekers. This is not the case. Mid Suffolk District Council is not lawfully able to assist asylum seekers under the Housing Act 1996 (as amended), as they do not meet the eligibility criteria for housing assistance. Accommodation for asylum seekers is arranged nationally by the Home Office through its contractors, not by local councils.

Eve Balfour House remains the property of Mid Suffolk District Council and will be used solely to support those we owe a homeless duty.

### **Local Government reorganisation**

The government consultation on the proposals for Suffolk and Norfolk was launched on 19<sup>th</sup> November. Everyone is invited to comment on the two proposals for Suffolk (one unitary council or three unitary councils) and you can submit your comments at

<https://www.gov.uk/government/collections/suffolk-local-government-reorganisation>.

### **Locality Awards**

The current round of grants, which began in April this year, will close in January. We have allocated most of our locality award grant for this year and have about £600 remaining so if any groups would like to submit an application do let us know as soon as possible. <https://www.midsuffolk.gov.uk/web/mid-suffolk/w/locality-awards>.

### **Other funding for community projects**

Details of Mid Suffolk Council's community funding can be found at:

[www.midsuffolk.gov.uk](http://www.midsuffolk.gov.uk) – click on the 'Access community funding' button.

For advice or further information, please email the grants team at:

[BMSDCgrants@baberghmidsuffolk.gov.uk](mailto:BMSDCgrants@baberghmidsuffolk.gov.uk)

### **Customer access point**

Anyone who prefers not to use the website links in this report can obtain information and help from the Mid Suffolk Customer Access Point at 54 Ipswich Street in Stowmarket. The Access Point will of course also give help and support on any other aspect of Council services.

Cllr Janet Pearson  
[Janet.Pearson@midsuffolk.gov.uk](mailto:Janet.Pearson@midsuffolk.gov.uk)  
07928 512592

Cllr Agnes Watson  
[Agnes.Watson@midsuffolk.gov.uk](mailto:Agnes.Watson@midsuffolk.gov.uk)  
07599 828819





As we approach the Christmas period, our school has been filled with Christmas Carols and joyous craft making. The children have designed their own Christmas Cards for parents and carers to purchase for their families, they've been practicing for the Christmas service in church and still had time to draft their Christmas lists for the big man himself!

We would love to welcome the village, along with parents and carers, to join us in Church on Thursday 18th December, 2.30pm to join in our Christmas Service.

Children return to school after the Christmas Holidays on Tuesday 06th January. We are looking forward to hearing their wonderful festive stories!

Thank you for your support while the electrical works are taking place, we are hoping this will be completed in February.

We also thank Mr Benstock for taking such good care of our school for the Autumn Term. We are so grateful for his dedication to Crawford's Primary during this time and we are sure you will all agree he has made a positive impact on the day to day running of the school.

We wish you all a wonderful Christmas  
and a Happy New Year.  
Best Wishes, Crawford's CofE Primary School



# QUIZ NIGHTS



at

**Wetherden Village Hall**

**Friday January 2nd (in lieu of Boxing Day)**

**Friday January 30th**

**Friday 27th February**

**7.30pm**



Teams to be a maximum of six, £2 pp  
please bring your own refreshments.



Why not come along????  
You will be sure of a warm welcome!!!!

To reserve a table contact:

[wetherdenvillagehall@gmail.com](mailto:wetherdenvillagehall@gmail.com) or call/text 07528065250

## HAUGHLEY PARISH COUNCIL

The Parish Council held a meeting on 18 November. Parishioners raised various concerns relating to the management of the Allotments and are being addressed. An improved means of communicating between allotment holders and the Parish Council has been introduced.

The Government consultation on the proposals for Suffolk and Norfolk was launched on 19 November <https://www.gov.uk/government/collections/suffolk-local-government-reorganisation>. The Development Consent Order for the planned Norwich to Tilbury pylon line has been accepted and is with the national Planning Inspectorate. Anyone wishing to make a representation needs to register with Inspectorate at:

<https://national-infrastructure-consenting.planninginspectorate.gov.uk/projects/EN020027>

Registration closes on 27th November 2025. Rural support grant, Locality Awards and Other funding for community projects remain open. We are to expect a Planning Application relating to Balfour House to support residents within the Mid Suffolk district who are homeless or at risk of homelessness. Cllr Janet Pearson has submitted further information for this issue.

A revised Emergency Plan for the Parish of Haughley has been drafted for use as guidance in the event of a major emergency in or near the Parish of Haughley; this was approved in principle and will be amended as additional information becomes available. Further information was received relating to the SCC Local Nature Recovery Strategy and Ancient Woodland Sites via Suffolk Tree Wardens. The new Stowupland Unauthorised Encampment Policy was considered and will be adapted for Haughley. The Council considered and agreed a range of grant funding applications.

Highways England has identified a range of roadworks to the A14 between Bury St Edmunds and Needham Market with various road closures and restrictions continuing through to the end of the year. Other road closures and roadworks were identified including some due to be completed before the end of November.

The Council considered the provision of dog poo bins, noting that there are already many bins about the Parish. A quote is being sought.

The Council received an update on activities at King George V playing field and proposals for the pavilion. Concern was expressed about the clearance of two bollards which have been removed by or for the developers, including one adjoining the playing field. Quotations are being sought for appropriate work to maintain appropriate security.

An update on the Christmas Tree event on the Green was received.

The Council agreed payments for November and considered aspects for the budget for 2026-7.

The following planning applications were considered:

**DC/25/04954** and **DC/25/04940** – Following the grant a recent planning permission, a variation to a Planning Condition at 58 Old Street Haughley – supported.

**DC/25/03728**. Listed Building application for 55 Old Street Haughley for Repairs and alterations including retiling, replacement windows, partial render replacement, and internal alterations. Supported with observations.

**DC/25/02405**. Notification for Prior Approval for a Proposed Change of Use of Agricultural Buildings to Dwelling houses at Rookery Farm, Haughley Green, has been approved by the Local Planning Authority.

The Council received an update on Neighbourhood Planning and a report from the recent meeting of the Biodiversity & Wildlife Conservation Group.

The next meeting of the Parish Council is scheduled for 16 December 2025 at the Pavilion.

**We wish all our Parishioners  
a Very Happy Christmas  
and a successful New Year.**



King George V Playing Field Committee

# Quiz Night

Saturday, 31<sup>st</sup> January 2026

**7pm for 7.30pm start**

At Haughley Pavilion

£5 per head, Max 6 people in a team

Raffle

Bar open (Please note bar is now card only)

Bring your own food/nibbles

To book a table please contact:  
Thirza Shaw 07786375441 Email [trtinker@aol.com](mailto:trtinker@aol.com)

Funds in aid of King George V Playing Field, Haughley

## ELMSWELL HISTORY GROUP

In November, we were treated to an illuminating talk by local historian Barbara McElroy, on the so-called “Golden Age” of smuggling in Suffolk, 1720-1830, notably due to the introduction of tariffs on Dutch and French products such as brandy, gin, lace and tea. Thus, taxes and contraband become lucrative for government and organised crime alike! This led to a century of a cat-and-mouse game between the smugglers evading capture and government excise officers aided by the military trying to thwart them. The ships bringing in the contraband were called cutters, and the crew and associated smugglers would have specific roles such as a Spotsman, Lander, Tubsman and Butsman. Pubs such as the White Hart in Blythburgh, played a key role in these smuggling operations ranging from storing the contraband, passing on information to the smugglers and getting soldiers drunk so they were unfit to chase down the smugglers! The Hadleigh Gang was one of the largest and most notorious smuggling gangs which could number 200 strong. Barbara highlighted an interesting factor that, in order for the smugglers to evade capture and ultimately prison, they had to be aided and abetted by the local community. This included fishermen, farmers, local labourers, landed gentry and publicans, all of whom received some form of payment for their assistance, be it a bribe or otherwise. The smuggling operations had to be complex at times to outwit the excise officers who often got wind of when an illegal shipment would be coming in. This could lead to violent confrontations, resulting in serious injury and occasional deaths. The “Golden Age” came to an end when many tariffs were removed and official coastal patrols based on navy protocols were introduced during the 19<sup>th</sup> Century.

Our **next meeting** at Elmswell's Wesley Hall (IP30 9EE), 7.30pm on **11<sup>th</sup> December**, will feature renowned local actor, Bryan Thurlow, to inform and entertain us with his talk/performance entitled “Borley Rectory”, which was a gothic Victorian building, built in 1862-3 on the site of an old monastery. In 1929, national newspaper headlines declared this building to be “England's most haunted house”, and this account of the ghostly goings-on at the Essex rectory is brought vividly to life, covering the period between 1841 and 1944. It features Reverend Smith and his wife, Mabel, as well as ghost investigator, Harry Price, who was sent to the rectory to find answers to the Smith's paranormal problems - but was this so-called expert all he professed to be? Do join us to find out and, afterwards, enjoy some seasonal refreshments to steady your nerves!



Our first meeting of **2026** will be on **8<sup>th</sup> January**, 7.30pm in the Wesley Hall, and will feature several short talks by our members on their own researches.

May we take this opportunity of wishing everyone a **Merry Christmas** and all the very best for a happy and healthy **New Year**.



**For further information about our History Group, please visit our website – [www.elmswell-history.org.uk](http://www.elmswell-history.org.uk) – or contact our Secretary, on 01359-242601**



**IT'S PANTO TIME AGAIN.....**



**HAUGHLEY AMATEUR THEATRICAL SOCIETY  
PRESENTS**



# **GOLDILOCKS & the 3 BEARS**



at

**HAUGHLEY VILLAGE HALL**

**Friday 20th Feb 2pm & 7.30pm**

**Saturday 21st Feb 2pm & 7.30pm**

**TICKETS £7.50 or 4 for £25**

**available from Haughley Post Office**

**or call 07746231114 or scan the QR code to buy online**

**An original script by Damian Trasler, David Lovesy and Steve Clark**

**Scan to Buy**





**1925 – 2025, 100 years of meetings, fun and friendship in the same village hall – what an achievement!**

The celebrations began on the Sunday with a Thanksgiving Service in St Mary's Church, Haughley, led by our newly inducted Rector, Reverend Andy Buttress.

Our President, Julia Brook, presented a brief history to Haughley WI and 6 members gave their personal experiences and thanks for the support and friendship that they had received. Recurring themes were that the WI is not all about baking cakes, is much more enjoyable than the image ladies generally hold of it and genuinely offers friendship.



Reverend Andy gave a talk on Empowered women in the Bible and we resurrected the WI prayer not heard for 40 years. The hymns were led by the choir and organist and the congregation joined in enthusiastically particularly with 'Jerusalem', our WI anthem.



Refreshments were served afterwards and the Prosecco and WI imprinted shortbread were popular.



On the Thursday evening, many of our members dressed in 1920s costume for a Centenary meal in the Village Hall and live music from 5-piece band, Caxton Swing. The room, decorated in 1920s style, was full of lively chatter and laughter.



Our longest-standing member, Pat Burrows cut the bespoke cake designed for this special occasion. Several guests were invited after the meal to share in the music and atmosphere.

To reach the milestone of 100 years is amazing and we felt therefore that it was important to have a lasting memorial to our Centenary.

On the Saturday, Reverend Andy unveiled the Haughley WI memorial in the Village Hall garden.



The artwork was crafted by a local blacksmith from Designs on Metal, based on an idea from our President, and was a real team effort. It was inspired by a cedar of Lebanon tree, 3 of which were planted in 1760 on the motte of Haughley Castle, destroyed in battle in 1173.



The brick plinth was skilfully built by a friendly bricklayer with much support from local builder Tony Gillon.

Cake rewards were baked by Yvonne Hannan and Jane Thompson. The cedar of Lebanon is symbolic of strength, wisdom and longevity – very apt for the 100 year old Haughley WI.

## STOWMARKET AND DISTRICT CAMERA CLUB

Monday 13<sup>th</sup> October. We welcomed several new potential members to the club for our first lecture of the season. Our guest speaker was Jonathan Vaines LRPS CPAGB AFIAP with the subject being 'Me Myself and Eye.' Jonathan's talk was original as he explored the artistic side of photography. In his own inimitable style he described his various projects mainly centred around multiple exposure and gave us a treat of colour and light. His back stories were intriguing especially the one about the Twin Towers.



Hovering by  
Perry Andrews



Gold Coast by Rob Gray

Monday 27<sup>th</sup> October. Nick Akers ARPS BPE4\* judged our first Open competition of the season this week and we had 2 members entering for the first time. Thanks to Nick for his detailed critiques and his indications where he felt slight amendments would help the images. The standard, as ever, was high so well done all those who entered.

For further dates and information please see our website  
[www.stowmarketanddistrictcameraclub.onesuffolk.net](http://www.stowmarketanddistrictcameraclub.onesuffolk.net)

New members are very welcomed. You do not have to be an 'Expert Photographer' all you need is a camera – any camera and a real interest in using it. Our members use DSLRs, mirrorless, compacts and bridge cameras. If you are interested in becoming a member, please email [Stowmarketcc@outlook.com](mailto:Stowmarketcc@outlook.com) or visit our website.



## HAUGHLEY & WETHERDEN PARISH NEWS

Would like to thank all our advertisers and contributors for their continued support and wish you all a very

Happy and Prosperous New Year

## Luke 2 (From The Message)

“<sup>15-16</sup> As the angel choir withdrew into heaven, the shepherds talked it over. “Let’s get over to Bethlehem as fast as we can and see for ourselves what God has revealed to us.” They left, running, and found Mary and Joseph, and the baby lying in the manger.”

I enjoy birdwatching. It gets me out in the fresh air, takes me on good walks and I see lots of birds. I’m not a twitcher as I don’t chase all over the country in search of the rare and elusive. However, in October I was out birdwatching with my brother and we met up with another birdwatcher. Suddenly his mobile and my brother’s went off at the same time and lo and behold there was a sighting of a possible rare bird in Suffolk. We carried on where we were, went for lunch, and later, on our way home, we thought we would look in to see if this rare bird was visible, as it was on our route home. We didn’t have difficulty finding the place as there were lots of cars parked up and people all over the place. We parked, walked a short way up this track and there in the bush was a lovely view of a Brown Shrike. This bird is found mainly in Asia and there are only a handful of records of it in Britain & Ireland. When we left people were still coming and there must have been 30+ people when we were there. Over the next few days people rushed from all over to see this rare sight.

How can it be that one small bird can elicit so much attention?

And it came to pass that Jesus was borne and that excitement created a wonderful response from the Shepherds – After the angels had gone, they immediately said let’s go and see what had come to pass. And they went as fast as they could.

Does the birth of Christ still excite us? Let us hope that this Christmas the excitement and the wonder of Christ will light up people’s lives and they will come in numbers and in haste to see what it is all about.

May God bless you this Christmas.  
Anne Scarff (Elder at Stowmarket)

### **WINNERS OF HAUGHLEY CHURCH'S MONTHLY £40 DRAW**

**Jo Sinclair**

The £40 draw is held in the last week of each month.  
Phone : 01449 774657 if you would like a ticket:  
£15 for the whole year.

## PARISH CHURCH SERVICES FOR DECEMBER 2025/JANUARY 2026

Benefice of Haughley with Wetherden and Stowupland  
(For more information please contact Revd Andy Buttress:  
email [revandybuttress@gmail.com](mailto:revandybuttress@gmail.com))

| <u>Date</u>  | Stowupland                                      | Wetherden                                     | Haughley                                      |
|--|---|---|---|
| Sunday Dec. 7th                                    | 9.30am Parish Communion                         | 6.30pm Carol Service                          | 4pm Christingle Service                       |
| Monday Dec. 8th                                    | 11.00am Steeple View                            |   | 2.00pm Mere View                              |
| Sunday Dec. 14th                                   | 4.00pm Christingle Service                      | 11.00am Parish Communion                      | 4.00pm Carol Service                          |
| Sunday Dec. 21st                                   | 6.30pm Carol Service                            | 4.00pm Christingle Service                    | 11.00am Parish Communion                      |
| Wednesday Dec. 24 <sup>th</sup><br>(Christmas Eve) | 4.00pm Crib Service                             | 11.30pm Midnight Communion                    | 4.00 pm A Nativity Production                 |
| Thursday Dec. 25 <sup>th</sup><br>(Christmas Day)  | 10.00am Christmas Morning Celebration Service   | 10.00am Christmas Morning Celebration Service | 10.00am Christmas Morning Celebration Service |
| Sunday Dec. 28th                                   |   |   | 11.00am Benefice Communion Service            |
| Sunday Jan. 4th                                    | 9.30am Parish Communion                         | 11.00am Morning Worship                       | 11.00am Sunday Praise                         |
| Sunday Jan. 11th                                   | 9.30am Worship for All                          | 11.00am Morning Worship                       | 11.00am Parish Communion                      |
| Monday Jan. 12th                                   | 11.00am Steeple View                            |   | 2.00pm Mere View                              |
| Tuesday Jan. 13th                                  |   |   | 5.00pm Pizza Church                           |
| Sunday Jan. 18th                                   | 9.30am Morning Worship with URC at Holy Trinity | 11.00am Worship for All                       | 11.00am URC/ Anglican Service                 |
| Sunday Jan 25th                                    | 6.30pm Evensong                                 | 11.00am Parish Communion                      | 9.30am BCP Said communion                     |

A BIG WARM INVITATION AND WELCOME TO YOU ALL

## ST MARY'S HAUGHLEY AND ST MARY'S WETHERDEN

Rector: Revd Andy Buttress Tel. 07749265571

Curate: Revd Alison Roberts Tel. 01449 613037

<https://www.achurchnearyou.com/church/2082/>

<https://www.achurchnearyou.com/church/1938/>

My first magazine article! I hope as the months go by you will read them and at least enjoy the jokes I will include!

I am the new Rector of St Mary's in Haughley and St Mary's in Wetherden (as well as Holy Trinity in Stowupland). I am married to Dawn and we have spent most of our lives living in small towns or villages including Great Barton (just outside Bury St Edmunds). We look forward to getting stuck into village life and meeting you all as time goes by.

Please be assured I am quite 'normal' (whatever that means). I love football, supporting two teams - Ipswich not Norwich and one other – the identity of which is a secret for now! I also love walking, running (when I am fit) and Welsh-border collies.

By the way, here's the joke:

*The other day I looked over my garden fence and noticed my next door neighbour kneeling on the grass with all his plants scattered around him, so I asked him what he was doing. He said he was putting all his herbs in alphabetical order. I said, 'I don't know where you find the time.' And he replied, 'It's over there next to the sage!'*

'Finding the time' over the Christmas period is often a challenge. There is often so much to do. My main aim each Christmas is to keep it simple. It is so easy for me to get wrapped up in meaningless materialism or run round like a head-less chicken, so much so, that what matters most gets missed.

For me community, friends and family matter most as well as my faith. Not just the church community, of which I am obviously a part, but local people and local communities which are part of our village life. As for my faith, that, of course, matters too. Whilst nativity plays are cute for kids, us adults need to think a bit deeper. What did happen back then which changed the course of history? Did God visit us? And if he did, why was Jesus born in poverty and squalor, pain and oppression?

Even if Christmas is hard for you, with difficult memories or ongoing present-day struggles, I would encourage you to do Christmas simply, do what matters most and put a little time aside to consider what the Christian faith means to you.

You are very welcome to come to our services over Christmas whether it's a Christingle, Carol, Crib or Christmas Celebration on Christmas morning. If you are coming to the Carol Service please make sure you get there early to get a seat.

So a merry Christmas and a Happy New Year too you all. May it be a special one - in the simplest of ways.

Revd Andy Buttress

A simple Christmas prayer: God of peace, help us to live simply so others may simply live. In our busy and sometimes chaotic world, give us the faith and courage to do things differently. Amen.



Mid Suffolk

**With it coming up to Christmas, I want to do more shopping online, but there's been things in the news about delivery problems. I'm worried about not receiving things on time or packages being lost. What should I do if my parcel goes missing?**

When you're online shopping, it's not always clear whom to contact if things go wrong.

As a customer your contract is with the seller that you bought the item from. It's the seller's responsibility to make sure the item is delivered to you. They should chase the courier to find out what happened to your order if there's a problem.

If your parcel hasn't arrived:

- Check the delivery address you gave the seller, to make sure it's correct.
- Then contact the seller and ask where your order is.
- If the seller claims they've delivered it or doesn't know where it is, you can ask for a redelivery. You might be able to get a refund in some circumstances where the delivery time was essential, and you let the seller know ahead of time.

Under the Consumer Rights Act 2015, you can ask the seller to deliver the item to you again if the item wasn't delivered either by an agreed date, or within a reasonable time - usually within 30 days. If the new delivery fails to come within a reasonable time, you can ask the seller for a refund.

Another problem people face is when parcels get left in different places, for example outside or with a neighbour.

If your item was delivered by Royal Mail:

- And they left your package with a neighbour or in a certain place because you told them to, it's not the seller or Royal Mail's responsibility if it gets lost.
- If they leave it somewhere you hadn't instructed, it's the seller's responsibility if it gets lost. You should contact the seller to ask for a redelivery or a refund.

If the item was delivered by a courier: Check your terms and conditions or account details - they might include other places for delivery, like your porch or a neighbour's house. If you agreed to them, it's not the seller's or courier's responsibility if your order has gone missing. However, if you did not agree to this, then it's the seller's responsibility if your order goes missing.

If you ordered something from a private seller or you're still having trouble after trying the tips above, you can find out more via the Citizens Advice website at <https://www.citizensadvice.org.uk/consumer/>

Citizens Advice Mid Suffolk can provide in depth advice on this issue and much more, including debt, finances, employment, benefits and family/relationships. You can contact them by phone on 01449 676060, visit in person at Milton House, 5 Milton Road South, Stowmarket IP14 1EZ or use the contact form at [midsuffolkcab.org.uk/contact-us](https://midsuffolkcab.org.uk/contact-us). Opening hours are Monday-Thursday 9.30am – 3.30pm and Friday 9.30am – 12.30pm.





## **HAUGHLEY UNITED FOOTBALL CLUB**

### **SPONSORSHIPS AVAILABLE**

If anybody / business would like to sponsor a game at Haughley United £100 per game or interested in any sponsorship please contact :

Colin 07708062435

Keep eye on our Facebook page  
for fixtures  
and events at the club



**TILING-SLATING  
ALL TYPES OF  
LEADWORK-REROOFING  
ROOF REPAIRS**

**HAUGHLEY,  
SUFFOLK IP14 3PN**

**Tel: 01449 613636  
Mobile: 07799 048956**

## **SMALL ADS**

**Deadline for the FEBRUARY 2026 issue**

**Wednesday January 21 2026**

- Table top fridge, brand new, £45 ono 07913 588914
- Yamaha PSP79 Electric Keyboard, hardly used, boxed, including manual £65 ono, 01449 258172

All small ads, max 20 words, should be sent to:

Email: [haughleynews@btinternet.com](mailto:haughleynews@btinternet.com)

or

**Anne Ardley, Oulton Cottage, The Folly, Haughley IP143NS**

*The following Terms and Conditions apply to all ads in this section: The Parish News takes no responsibility for the quality, safety, condition or true value of the items placed in the Small Ads Section. The Parish News Editors maintain the power of veto on the suitability of the Adverts. Ads will be placed on a first come first served basis and held chronologically for space in the magazine.*

*Please note that the 'Small Ads' service has been introduced for the benefit of Haughley and Wetherden residents. Commercial advertisers may advertise in this section on payment of a fee, only if there is no advertising space available elsewhere in the Parish News.*



**S.A Roofing**  
**Steven Allum**  
 Specialising in all aspects of roofing

|  |  |
|--|--|
| <b>Roof Tiling</b><br>New Roofs<br>Re-Roofs<br>Repairs<br>Leadwork | <b>Flat Roofs</b><br>Felt<br>Rubberbond (EPDM)<br>Fiberglass (GRP) |
|--|--|

Landline: 01449 553596  
 Mobile: 07545071147  
 Email: saroofting@hotmail.co.uk

## Alexander Technique



Alison Hasselder offers both Alexander Technique one to one lessons and workshops.

Workshops are relevant to both pupils who have never experienced the technique and for those who have previously either attended a workshop or had private lessons.

The Alexander Technique can help individual with back and neck pain learn what they are doing to themselves in daily life that can aggravate these injuries.

For more information contact Alison:

**Contact:** Alison Hasselder

**Telephone** on 07974650343

**E mail:** alison@whitehousefarm.co.uk

**Location:** Wetherden

## BLOMFIELD MAINTENANCE

### Gas and Heating Services

**BOILERS &  
HEATING SYSTEMS**  
 Service & Repair

**COOKERS & HOBS**  
 Installation  
 Service & Repair

### LANDLORD REPORTS

*Providing local professional gas services for over 30 years*

01359 241454 07889 616937



Karen Harper



T: 01473 558885

E: info@thelarkpartnership.co.uk  
 www.thelarkpartnership.co.uk

A "people first" Estate Agency serving Suffolk, Essex & Norfolk, honest advice, personal service, and expert guidance.

**AVC**  
 Architectural  
 Consultant



07818 417964

office@avcarchitectural.co.uk

Planning  
 Building Regs  
 Structural



All forms of landscaping and garden maintenance undertaken

- Patios & paving
- Fencing
- Garden edging & retainers
- Decking
- Shed bases
- Grass cutting

For a free quote contact

07931089125

Contact: jblandscapes@gmail.com



# SUFFOLK

HOME RENOVATIONS LTD

OVER 20 YEARS EXPERIENCE  
SPECIALISING IN:  
BESPOKE BUILDING PROJECTS  
RENOVATIONS & CONVERSIONS.

FULLY LICENSED AND INSURED

OFFICE: 01449 516617 MOBILE: 07889 960758

suffolkhrenoations@gmail.com

www.suffolk-home-renovations.uk



FREE ESTIMATES



## MP Plumbing & Heating



OIL BOILER ENGINEERS

*From Toilets & Taps To Servicing & Installation*

**Matthew**



**TRADING  
STANDARDS**

**APPROVED**



07901 712 260



@PlumbingAndOil



PROUD MEMBERS OF

**Checkatrade.com**  
Where reputation matters



*From Toilets & Taps  
To Servicing & Installation*





Domiciliary footcare home visits:

Nail trimming | Fungal nail

Corns | Verruca

Athlete's foot | Thickened nail

Ingrown toenail | Diabetic footcare

Callus (dry/hard) skin removal

● Elizabeth Stiff MCFHP MAFHP  
Foot Health Practitioner (FHP)

☎ 07546 043753

✉ info@heeltotoe.co.uk

🖱 heeltotoe.co.uk

📘 facebook.com/heeltotoe.co.uk



M A Heating Services Ltd



\* Oil, Gas and LPG boiler  
servicing, replacements and repairs

\* Repairs to central heating  
system faults i.e. pumps, programmers and  
cylinders

\* Servicing and repairs to Rayburn, Aga  
Stanley and Esse

\* Landlord's Certificates

Telephone: 01379 783427

Wickham Gate, High Street, Gisleigham,  
Suffolk, IP23 8JD

**Sji greengrocers** Ltd.

Fruit, vegetables and salad delivered fresh to your door every week.

Fresh tasty produce.

Free weekly delivery (on orders over £7), every Wednesday.

No need to be in.

Mixed boxes, build your own box & business to business.

See website for further information.

www.sjigreengrocers.co.uk

01449 257491 / 07786 165402

Sandjirons@hotmail.co.uk

**KH**

**Kevin Hollings  
KITCHEN STUDIO**

Unit 14 Lodge Works,  
Stowmarket Road,  
Old Newton,  
IP14 4EE

01449 257160

info@kevinhollingskitchens.co.uk

www.kevinhollings.com







## J W LANDSCAPING

LOCAL LANDSCAPING COMPANY PROVIDING  
A PROFESSIONAL AND AFFORDABLE SERVICE  
WITH MANY YEARS EXPERIENCE

ALL TYPES OF FENCING - TURFING  
SEEDING - DRIVEWAYS & PATHS -  
STONING - TARMAC - TAR & CHIP -  
DIGGER WORK - SITE CLEARANCE

Why not give us a call for quote

07387760807    01284 624088

## MEADOW GRACE

PLUMBING HEATING BATHROOMS

Plumbing and heating engineer with over 20 years' experience.  
Providing a friendly, reliable and professional service with an  
emphasis on high standards of workmanship and conscientiousness.

- Full bathroom suite installation (inc. design and management)
- Boiler installation, replacement and maintenance
- Full heating system installation and upgrade
- Hot water cylinder upgrade and replacement
- Power flushing
- All general plumbing

☎ Sean: 07983 403 289

✉ meadowgraceph@gmail.com

📷 instagram.com/meadowgraceph



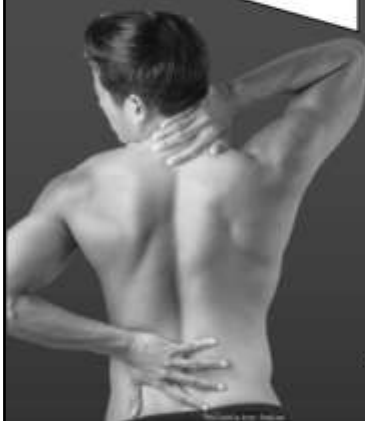
### Special Cakes For Special Celebrations



01359 241135

[www.amazingcakesbyjean.co.uk](http://www.amazingcakesbyjean.co.uk)

**BREAK  
FREE  
FROM YOUR  
PAIN**



### Have you been suffering with:

Neck pain □ Whiplash □ Back pain □ Sports injuries  
Shoulder pain □ Repetitive strain □ Postural problems  
Wrist & hand pain □ Sciatica □ Hip, knee or ankle pain  
Neurological disease □ Work related injury □ Arthritis



Gill Yusaf



Dr Ehab Georgy



Chris Forsdyke

Come to see our expert physio team  
for a **Speedy Recovery**

Call: 01359 241304

Online: [bit.ly/BookaPT](http://bit.ly/BookaPT)

**PHYSIO...WITH A DIFFERENCE**

StowHealth  
Violet Hill Rd,  
Stowmarket  
IP14 1NL





63 Old Street, Haughley, Nr Stowmarket  
Tel: 01449 673366

58 Barton Road, Thurston, Bury St. Edmunds  
Tel: 01359 232200

#### OPENING TIMES

Monday - Friday 8.30pm - 6.30pm

Saturday 8.30am - 11.30am - Haughley Surgery

Saturday 12.00 - 3.00pm - Thurston Surgery

Please telephone to make an appointment

Or visit our website:

[www.haughleythurstonvets.co.uk](http://www.haughleythurstonvets.co.uk)

## Rushbrook's

— CHIMNEY SWEEP —

'Guild of Master Chimney Sweeps'  
registered Chimney Sweep, providing  
professional service to ensure your  
chimney is clean and your home safe.

Services include:

- Open fire, wood burners and Inglenooks swept
- Stoves checked and serviced for efficiency
- Birds nest removal
- Safety Inspections and Smoke Tests
- All work fully insured & certificates issued.

Contact Robert Rushbrook email:

[rushbrookschimneysweep@hotmail.com](mailto:rushbrookschimneysweep@hotmail.com)

Tel: 07581 352772 or 01449 612296



**HOME IMPROVEMENTS**  
Plumbing • Kitchens • Bathrooms

**Local. Reliable. Family-run.**

For all your plumbing,  
bathroom and kitchen needs  
contact David Howard

Call: 07917 003 880 / 01449 672844

Email: [enquiries@davethefitter.co.uk](mailto:enquiries@davethefitter.co.uk)

Church View, Haughley, Suffolk



## Red House Farm Haughley Self Catering Accommodation Caravan Site

(with electric hook-ups)

For more information and bookings contact

Red House Farm, Haughley

Tel 01449 673323

[www.RedHouseFarmHaughley.co.uk](http://www.RedHouseFarmHaughley.co.uk)

## GRAHAM MOORE ELECTRICAL Ltd

**For all your electrical needs**

**For a friendly and efficient service  
call Graham on**

**Tel: 01449 616946 Mobile: 07867 560357**

**Old Newton**

**FREE ESTIMATES • ALL WORK GUARANTEED**





## The Old Tea Room Veterinary Surgery

For a professional caring service

**01359 241761**

Station Road, Elmswell, IP30 9HA

**elmswellvets.co.uk**



Independent practice with a personal approach

## R&Z Electrical



All Aspects of Electrical Works Undertaken

Extra Sockets / Lights  
Full / Part Rewires  
Consumer Unit Upgrades  
Fault Finding & Repairs  
Testing & Inspection

All Works Carried Out to Current Regulations  
All Works Certified and Guaranteed  
Fully Insured  
Free Estimates  
24 Hour Call Outs

Anthony Allocca

[rz.electricalservices@gmail.com](mailto:rz.electricalservices@gmail.com)

07801990584



## R S A PEST MANAGEMENT SERVICES HAUGHLEY

Tel No: 01449-672083

Mobile 07745-771516

## GAME OVER

For

Rats, Mice, Moles, Rabbits, Squirrels, Ants, Wasps, Flies, Birds,  
Bees, Cockroaches, Bed bugs, Fleas, Woodworm etc..

30 year guarantee available on timber treatments, damp proofing

## Deer & Fox Management

Fully qualified and insured pest control



For a service you can rely on for effective control of farm, garden and households pests.

Members of National Pest Technicians Association

*Unmarked vehicles and discreet service*





## A.W SERVICE CENTRE LTD

SMALL INDEPENDENT FAMILY RUN  
GARAGE OFFERING GENERAL VEHICLE  
SERVICE AND REPAIR

CLUTCHES, CAMBELTS, SERVICING,  
BRAKES, SUSPENSION, TYRES,  
PRE-MOT CHECKS, ARRANGED MOT'S  
VEHICLE COLLECTION AND DROP OFF  
AVAILABLE ALONG WITH A  
COURTESY CAR

CALL NATHAN:  
07990687516 or 01449 672241

APPLEWHITES FARM,  
FINNINGHAM ROAD,  
OLD NEWTON,  
STOWMARKET, IP14 4EU

DIGITAL

# copycentre



*For All Your Printing*

News letters, Flyers  
Booklets - Magazines  
Plan Prints up to AO size  
B/w, Colour & Scanning  
Order of Services  
Sewing Patterns  
Comb binding  
Laminating

Email: [info@digitalcopycentre.co.uk](mailto:info@digitalcopycentre.co.uk)

37 Stowupland Street, Stowmarket, IP14 1EG

**01449 678100**

## CHIMNEY SWEEP

### ECO SWEEP CHIMNEY SERVICES

- NEW POWER SWEEPING METHOD USED FOR A MORE THOROUGH CHIMNEY CLEAN THAN BRUSHES
- INDUSTRIAL HEPA FILTERED VACUUM
- FULLY INSURED
- INSURANCE RECOGNIZED CERTIFICATES ISSUED
- SPOTLESS, RELIABLE AND FRIENDLY SERVICE
- ALL CHIMNEYS, WOODBURNERS, AGA, BOILER FLUES SWEPT.
- GUILD OF MASTER SWEEPS CERTIFICATED MEMBER



**TEL: 01359 232335**

YOU NEED IT?

**CLARKES HAVE IT!**

**CLARKES**  
OF WALSHAM LIMITED



**ROUGHNECK**

**OX**

**Makita**

**SEALEY**

☐ TIMBER & BUILDING MATERIALS

☐ GARDENING & LANDSCAPING

☐ GATES & FENCING

☐ AGGREGATES

☐ BESPOKE JOINERY

☐ TOOLS & HARDWARE

01359 259 259

[clarkesofwalsham.co.uk](http://clarkesofwalsham.co.uk)

The Street, Walsham-le-Willows, Bury St Edmunds, Suffolk, IP31 3BA



Huge product range including  
 Trees – Shrubs – Roses  
 Perennials – Alpines  
 Bedding plants.  
 Composts – Fertilisers  
 Garden Furniture  
 Water Features – Ornaments  
 Large Range of Ceramic Pots  
 Tools – Seeds – Bird care  
 And lots more ....

Just off A14 at Junction 49  
 Spikes Lane, Stowmarket, Suffolk IP14 3QD  
 Tel: 01449 612559  
 Email: [info@nareys.com](mailto:info@nareys.com)  
[www.nareys.com](http://www.nareys.com)

## AUTO PERFECTION (EA) LTD

UNIT 9/10, THURSTONS YARD,  
 OLD NEWTON IP14 4EE  
 TELEPHONE:- 01449 612576

Established over 20 years

**MOT TESTING STATION**  
**SERVICING**  
**REPAIRS**  
**AIR CON REGASING**



**AP TUNING**

Remapping for diesel & petrol cars/vans  
 Solutions for EGR & DPF  
 & ad blue problems

## 4 CLEANRIGHT

TRADING LOCALLY FOR OVER 15 YEARS  
 CARPET, RUG AND UPHOLSTERY CLEANING SPECIALISTS



DOMESTIC,  
 END OF  
 TENANCY  
 & COMMERCIAL

**7** WE  
 CLEAN  
 DAYS A  
 WEEK!

**CARPETS** Lounge from £30  
**RUGS** From £5  
**UPHOLSTERY** From £25  
**MATTRESS** From £10

Grade 'B' Clean includes:  
 Deodorisers, Conditioners and  
 High-performance Clean (optional).  
 Grade 'A' Clean includes:  
 Fabric Protector (optional).

**RELIABLE  
 PROMPT  
 SERVICE**

PLEASE CALL US FOR A FREE QUOTE

**TEL 01449 711687**

[4cleanright.co.uk](http://4cleanright.co.uk)



Proud to be making a difference in our community

Golden Charter  
 Funeral Plans

**01449 771666**

[www.stowmarketfunerals.co.uk](http://www.stowmarketfunerals.co.uk)

The Nutshell

Milton Road South

Stowmarket

IP14 1EZ



## WETHERDEN BABY & TODDLER GROUP



We are a friendly group who meet on  
**Thursday mornings 9.30-11am**  
during term time at  
Wetherden Baptist Church.

We have free play, craft activities, Bible stories, singing time and refreshments.

We ask for a donation of £1 per family per session to cover costs.

See our Wetherden Baby & Toddlers Facebook page for more information.

## Ray Goudy Trailer Repairs

**HGVs \* Trailers \* Cars \* Vans \* Motorhomes**  
**\* Horse Boxes \* PSVs**

- MOT/ATF Station for all Makes/Models
- Service/Repairs to all Makes/Models
- EBS/ABS for all Makes/Model
- HGV/Trailer brake roller testing facility
- HGV Trailer Hire



Plot 1, Tomo Ind Est, Tomo Rd, STOWMARKET, Suffolk, IP14 5AY

For more details phone, email or check out our web site:

Tel: 01449 673989 E Mail: [atf@rgtr.co.uk](mailto:atf@rgtr.co.uk)



[www.rgtr.co.uk](http://www.rgtr.co.uk)



VOSA Authorised  
Testing Facility



## FREE ADVICE!

On all your double-glazing enquiries including:

- 'A' energy-rated UPVC windows
- Doors
- Conservatories
- Rainwater goods i.e. fascias, soffits, guttering and downpipes

Removal and full replacement of the above.

All repair work undertaken e.g. sealed units, window/door handles, adjustments to windows/doors

Replace your old polycarbonate conservatory roofs with 'A' rated self-cleaning glass

Enquiries to:

Michael Brame  
(Bacton) 01449 781533  
Mob. 07931 784470

## TankChange Ltd.

**Suppliers & Installers of Oil Tanks.**

Family Business with Over 40 Years Experience

Steel & Plastic Oil Tanks available

Fully Insured OFTEC Registered Engineers.

Telephone: 01449 781210

Out of hours: 01449 781498

Visit our website @: [WWW.TankChange.co.uk](http://WWW.TankChange.co.uk)

*Discounts available to parish magazine readers*

# PRYKE ELECTRICAL

**Tel: 01449 612537**

*Your local electrical service  
contractor for expert advice*

- Rewiring • New Installation
- Testing and Repair Work
- Electric heating, power, lighting etc.

Unit 5, Glebe Farm  
Onehouse, Stowmarket  
Email: [info@prykeelectrical.co.uk](mailto:info@prykeelectrical.co.uk)







## AP Bowman Decorators Ltd

Professional Decorating Service

Tel: 01473 403137 **Andrew Bowman**  
**Mob: 07873 760266**  
 andy.bowman27@gmail.com

**Quality Decorating Service**  
**Interior & Exterior**  
**Wallpapering**

## JOHN BULL MOTORS LTD

**Petrol and Diesel MOT testing,**  
**Servicing, repairs and Diagnostics.**

Unit 7B,  
 Charles Ind. Estate,  
 Stowmarket, IP14 5AH.

Phone: 01449 774150  
 Fax: 01449 675898  
 Email: Johnbullmotors@  
 btconnect.com

**Free Collection and Delivery.**  
**Courtesy Car available by prior arrangement.**

**Fed up of running around after your car?**

*Why not give us the inconvenience – it's part of our service*

**WE COLLECT AND DELIVER**

Servicing, Welding, MOTs arranged

General repairs – shocks, clutches, brakes etc.

Air-conditioning recharged

All work guaranteed

# S & P Motecare

Established 1990

Contact: S. Mayhew, Gipping Rd, Stowupland

☎ (01449) 771102 ☎ (07802) 545737 (Mobile)

*Personal Service at Competitive Rates!*

## BRIAN DAVISON

## LANDSCAPING CONTRACTOR

Hard and soft landscaping

Patios, Drives, Paving work

All types of fencing, Sleeper retaining walls

Mini digger work

Tree work and woodchipping

All rubbish cleared

Waste carrier licensed & Fully insured

Local reliable service

Contact Brian at [brian\\_davison@sky.com](mailto:brian_davison@sky.com)

mobile 07796 156060

home 01359 241043

## MARK BUCKLE ELECTRICIAN

**J.I.B. REGISTERED**

RE-WIRING, EXTRA SOCKETS,  
 STORAGE HEATING, SHOWERS,  
 SECURITY LIGHTS

**FREE ESTIMATES**  
**NO CALL OUT CHARGE**

TELEPHONE 01449 614796  
 MOBILE 07803 077776

## PLUMBING

**For All Your Plumbing Requirements**

**Large or Small**

**Central Heating and Domestic**

**Contact: Andrew Snowling**

**Stowmarket (01449) 675440**

# DIRECTORY

## **PLACES OF WORSHIP**

### **Parish Churches of Haughley and Wetherden**

Revd Andy Buttress - Rector -  
revandybuttress@gmail.com

07749265571

www.achurchnearyou.com

Curate: Revd Alison Roberts Tel.

01449 613037

Haughley Ch Warden: Dr J Gibson

Wetherden Ch Wardens: Ann Cooke  
& Elizabeth Elbourne

### **The Baptist Church Wetherden**

Minister: Hugh Davis: 01359 242435

Secretary: J W Rushbrook:

01359-240118

### **United Reformed Church, Stowmarket**

Secretary: Brian Hewitt,

07500734113

Ass Secretary: Mary Durrant,

01449 672608

Treasurer :Anne Scarff:

01449 774792

annescarff11356@btinternet.com

### **Roman Catholic Church of Our Lady, Stowmarket**

Fr. Simon Leworthy 01449 612946

## **PARISH AND DISTRICT COUNCIL**

### **Haughley Parish Council**

Chairman: Gerald Brown

Gerald.brown@haughley.pc.co.uk

M: 07969 654520

### **Wetherden Parish Council**

Chairman: Cllr Duncan Perry, email  
duncanper-

ry@wetherdenparishcouncil.gov.uk

Clerk: Christine Mason: 07545783987

clerk@wetherdenparishcouncil.gov.uk

### **Member of Parliament:**

Adrian Ramsay: 07534 933 356

WaveneyValleyOffice@parliament.uk

### **Mid Suffolk District Council:**

Agnes Watson: 07599 828819

Agnes.Watson@midsuffolk.gov.uk,

Janet Pearson: 07928 512592

Janet.Pearson@midsuffolk.gov.uk,

## **DOCTORS, SCHOOLS, & ESSENTIAL SERVICES**

### **Citizens Advice Bureau:**

01449 676060

### **Haughley Post Office:**

01449 676789

### **Health Centre, Stowmarket**

01449-776000

### **Health Centre, Woolpit :**

01359-240298

### **Health Centre, Mendlesham**

(Chapel Rd):01449 767722

### **Bacton Manor Farm Surgery:**

01449-781777

### **Combs Ford Surgery, Stowmarket**

01449-678333

### **Haughley Crawfords VCP School**

01449-673253

### **Stowupland High School:**

01449-674827

### **Haughley Pre School Playgroup:**

07880 738781

**Anglian Water:** 03457-145-145

**British Gas:** 0845-609-1122

**UK Power Networks:** 0800 31 63

105 (power cuts)

**Refuse Collection:** 0845 606 6067

### **Wetherden Street lighting:**

0800 591055

## **HALL BOOKINGS**

### **Haughley Village Hall:**

Lyn Allum 07837 953266 or email:

lynnallum@hotmail.com

### **Maxwell Charnley Community**

**Room:** booking: 01449 676789

### **Ron Crascall Pavilion:**

Thirza Shaw: trtinker@aol.com

or 07786 375441

### **Haughley Scout Hut:**

Richard Stacy 01449 673311

### **Wetherden Village Hall:**

Keith Watts 07528 065250

wetherdenvillagehall@gmail.com or

www.wetherdenvillagehall.com

All details correct at time of printing.  
Please inform Editor of any changes ASAP.

## **LOCAL VOLUNTARY CLUBS & ORGANISATIONS**

**Beavers, Cubs & Scouts** : Carly Banthorpe 07976294616 or Richard Stacy 01449 673311.

**Bellringers Haughley** - practice 1<sup>st</sup> Mon evening in month  
Richard Coe: 07913 588914

**Bellringers Wetherden** - practice  
Tues evening at church:  
Basil Hart: 07894555348  
Email: MrBHart@hotmail.com

**Bowls Indoor or Outdoor Haughley**  
contact Peter Mead 07845068679  
**Indoor/carpet Bowls** Wendy  
07773972746

**Choir Haughley** - Thurs evening:  
Janet Sheldrake 01449 737247

**Mid Suffolk Folk Dance Group:**  
Ron Coxall Hall 01449 672658  
Thursdays Haughley Village Hall  
Thursdays 7.30 Wetherden Village Hall, Margaret/John Doy  
01473 742015

**H.A.T.S.** Haughley Amateur Theatrical Society:  
Alex Ball: 07746231114 or email  
Haughley.pantomime@gmail.com  
**HUFC** –Senior football contact – Lee Forsdyke 07472902302

**Haughley Youth Football** contact –  
Carly Banthorpe 07976294616

**Haughley Football Club:**  
Ian Wilkinson 07802 647674  
or Lee Forsdyke 07472 902302

**Haughley History & Parish Archive:**  
Kieron Palmer: 07583081797

**Haughley Hoofers Clog Dancers:**  
practice Sunday 7.30 at Village Hall,  
Gill Brett: 01449-673518

**Haughley IT Squad:**  
haughleyhitsquad@gmail.com  
**Haughley Parish in Bloom:**(HPIB)  
Alison Pepper: 07714 415148  
alison.pepper@haughtleypc.co.uk  
Yvonne Tricker: 07415 230088  
yvonne.tricker@haughtleypc.co.uk

**Haughley Royal British Legion:**

Branch Chairman:

Tim Hart 01449 613680

**Haughley Singing for Wellbeing Group**

Lynn Elliston, 07979832980

**Haughley and Wetherden**

**Twinning Association:**

Chairman, Richard Standen  
[richardstanden@gmail.com](mailto:richardstanden@gmail.com)  
07760 165 889

**Wetherden Baby & Toddler Group**

Sarah Chukwu: 01449 674101  
[slchukwu37@gmail.com](mailto:slchukwu37@gmail.com)

**1<sup>st</sup> Wetherden & Haughley Scout Group:** Group Scout Leader:

Catherine Winter 01449 781372  
[catherine.winter@outlook.com](mailto:catherine.winter@outlook.com)

**Wetherden FC** - Jonathan Lewis (Manager) 01449-678234 or Trudy Hooper (Secretary): 01842-754170

**Wetherden History Group:**

Pat Tuffin 01359 240396.

**Wetherden Table Tennis Club:**

Dawn Gibson 01359 240 259

**Wetherden Tennis Club:**

Sara Parker, Membership Secretary,  
07515 160840  
[wetherdentc@gmail.com](mailto:wetherdentc@gmail.com)

**Whist Drive** - monthly, Wetherden Village Hall:

James Rand 07972 633518

**WI Haughley** - 1<sup>st</sup> Wed in month, 7.00pm, in Haughley Village Hall:  
Jane Thompson: 01449 677079

## **HAUGHLEY & WETHERDEN PARISH NEWS**

**Editorial/Advertising Copy:** Anne

Ardley 01449 678040 or email:  
[haughleynews@btinternet.com](mailto:haughleynews@btinternet.com)

Copy Assistant:Elizabeth Ardley-Walker

**Treasurer**– David Bryant

Front Cover: E. Ardley-Walker

**Printing** - Digital Copy Centre  
01449 678100

H&WPN website: <https://www.haughley.org.uk>



# Eastern Frames

Your Local, Professional Picture Framers  
Framing • Photo Printing • Greetings Cards



Needlework Framing Experts

Fast & Reliable Service

Station Rd Haughley IP14 3QP

Tel. 01449 675897

www.EasternFrames.co.uk

Mon-Fri 9am-5pm Sat 9am-12noon

Would you like to  
advertise  
your business?

For advertising rates  
contact Anne :

01449 678040 or

haughleynews@btinternet.com

**JAY NICHOLLS & CO.**  
**SPECIALISTS IN**  
**PERIOD PROPERTY**  
**RESTORATION**

*renovation work, all repairs,  
alterations, conversions,  
roofing, decoration etc.*

Quality Work Guaranteed

01449 781375  
07804957190

*Complete Building Service*

## DISTRIBUTION & DELIVERY

We aim to deliver your copy to your door by the 1st of the month in all weathers. Occasionally we experience circumstances which delay printing and delivery. If you haven't received your copy by the 2nd of the month, please contact:

David Bryant on:  
01449 774657 or email  
dlbryant@btinternet.com.

Due to the nature of the Parish News we are unable to publish 'letters to the Editor' and whilst we take every care in ensuring that all the information supplied by the deadline is included, we take no responsibility for the content of articles. All adverts are placed in good faith and the H&WPN cannot be held responsible for any work carried out.

### MAIN HALL

- Tables & Chairs to seat 100
- Seats 150 for Close Audience
- The hall is fully heated, with blackout blinds and a new solid beech wood floor
- Access to toilets including disabled
- Door to enclosed garden
- Staging available

### GREEN ROOM

- Tables & Chairs to seat 40
- Hard Floor
- French windows to enclosed garden
- Own kitchenette equipped with microwave, kettle and crockery
- Disabled toilet

### Suitable for :

- \*Wedding Receptions
- \*Parties
- \*Private meetings
- \*Dances
- \*Classes

AVAILABLE FOR  
HIRE  
HAUGHLEY  
VILLAGE HALL

### To Hire Contact:

Lynn Allum  
07837953266

lynnallum@  
Hotmail.com

\*We currently have an Introductory Offer rate for new local groups

### THE OLD READING ROOM

- Tables & chairs to seat 30
- Access to enclosed garden
- Wood Floor
- Black Out Blinds

### EXTRA FACILITIES AVAILABLE TO ALL ROOMS

- Free WiFi
- Fully equipped kitchen with oven/hob, 2 large fridges, large hot cabinet, tea urn
- Crockery place settings for 100
- Glasses
- Portable PA system
- Projector & screen



## **Lamberts Service Station Ltd**

www.lambertsservicestationltd.com Email : lamberts.1@btconnect.com

Shop Green, Bacton, Stowmarket, IP14 4LG, Tel: 01449 781260

Mobile: 07834 778116

### **Car Service, MOT Testing and Repairs**

**Please visit our website for  
full list of services.**

#### **WORKSHOP**

Service all Makes and Models  
Air Conditioning  
Engine Diagnostics  
Fault Finding  
Engine Management Lights  
Exhausts  
ABS

#### **ITEMS STOCKED**

Tyres  
Batteries  
Wiper Blades  
Bulbs  
Calor Gas

#### **MOT TESTING**

MOTS while you wait - By Appointment  
Petrol  
Diesel  
Electric Cars  
Hybrids

#### **Electric Vehicles**

Diagnostic and  
Repairs



#### **RECOVERY SERVICE**

Home Starts  
Breakdown

#### **Air Conditioning**

#### **Air Con Repairs**

#### **FORECOURT SERVICES**

Petrol and Diesel  
Tyre Pressure and Levels  
Checked  
Bulbs Fitted While You Wait  
Antifreeze Check

**Competitive prices on Tyres - Quotes given  
Free no obligation Estimates on work needed**



Find us on Facebook - [www.facebook.com/lambertsservicestation](http://www.facebook.com/lambertsservicestation)



## **Fox & Co Jewellers of Stowmarket**

A traditional Jewellers with a modern touch

❖ **Specialists in Diamond Jewellery**

❖ **Gold & Silver Jewellery • Watches & Giftware**

❖ **Over 2000 Wedding Ring designs**

❖ **Watch Batteries & Straps Professionally fitted from £3.95**

❖ **High Prices paid for Gold & Silver!**

❖ **Second Hand Jewellery • Great Value Jewellery Repairs**



**[www.foxandcojewellers.com](http://www.foxandcojewellers.com)**

**Tel: 01449 616333**

**60 Ipswich Street, Stowmarket IP14 1AD** (Opposite the Oak Public House)