

HAUGHLEY & WETHERDEN PARISH NEWS



Wetherden Bonfire & Fireworks

**At the Playing Field
On Saturday 2nd
November
Starts 5:30pm**



**BBQ, bar, hot drinks etc. - cash only.
This event relies on donations, please give generously.**

OCTOBER 2024

PALMERS BAKERY **HAUGHLEY**

Established 1869 – Over 150 Years of Excellence
**TRADITIONAL HIGH CLASS ARTISAN
FAMILY BAKERS & CONFECTIONERS**



Fred Bullet delivering bread by Horse & Cart 1910 "© Palmers (Haughley) Limited

**FRESH BREAD & CONFECTIONERY BAKED DAILY BY CRAFTSMEN USING LOCAL
INGREDIENTS & BAKED IN ANCIENT BRICK OVENS**



01449 673286



The Village Green~ Haughley

Largest Stockist of Tiptree Jams & Marmalades in East Anglia.

Suffolk Honey, Free Range Eggs, Groceries & Local Produce.

Freshly Made Sandwiches & Filled Rolls - Hot Drinks & Bacon Rolls

*Also at Stowmarket, Woolpit, Stanton and
Brett's Bakery Needham Market & Freshfills of Claydon*

*Seven Generations of Baking, Tradition & Service for Over 150 years
Through the Reigns of Seven Monarchs*

HAUGHLEY VILLAGE HALL COMMITTEE AUTUMN GET-TOGETHER!



DANCING

LIVE MUSIC

featuring Savannah Love

covering hits from the last 7 decades including:
Tina Turner, Elvis, The Real Thing, The Mavericks,
The Beatles, Adele, Bon Jovi, The Shirelles, Stevie
Wonder, The Blues Brothers and loads more!

Saturday, 12th October

7.00 - 11.30pm

Haughley Village Hall

Bar - Plough man's - Raffle

Tickets: £12

Available from The Post Office
Sue Lewis (07709 715 935) or
Lynne Mahon (07941 116 240)



DATES FOR THE DIARY - 2024

OCTOBER

Sat 5th	*Community Café, Haughley Village Hall	10.00am
Sat 5th	*Film Nights: "Hampstead", Haughley Village Hall	7.00pm
Sun 6th	*Haughley Hoofers Clog Dancers, Haughley Village Hall	7.30pm
Tues 8th	Bingo, Haughley Pavilion	7.00pm
Wed 9th	Singing for Wellbeing Group, Haughley Village Hall	7.15pm
Sat 12th	*Community Litter Pick	10.00am
Sat 12th	*Stained Glass, Wetherden Church	10.00am
Sat 12th	*Haughley Church Castle-themed coffee plus tapestries	11.00am
Sat 12th	*Autumn Get Together, with Savannah Love, Haughley Village Hall	7.00pm
Sun 13th	*Haughley Hoofers Clog Dancers, Haughley Village Hall	7.30pm
Sat 19th	* Afternoon Tea, fundraiser, Haughley Village Hall	2.00pm
Sun 20th	*Haughley Hoofers Clog Dancers, Haughley Village Hall	7.30pm
Wed 23rd	Singing For Wellbeing Group, Haughley Village Hall	7.15pm
Sat 26th	*Haughley Church Quiz, Haughley Village Hall	7.30pm
Sun 27th	*Haughley Hoofers Clog Dancers, Haughley Village Hall	7.30pm

NOVEMBER

Sat 2nd	Community Café, Haughley Village Hall	10.00am
Sat 2nd	*Wetherden Bonfire & Fireworks, Playing Field	5.30pm
Sat 2nd	*Film Nights: "Red Joan", Haughley Village Hall	7.00pm
Sun 3rd	*Haughley Hoofers Clog Dancers, Haughley Village Hall	7.30pm
Sun 10th	*Remembrance Service, Wetherden Church	10.50am
Sun 10th	Remembrance Service, Haughley Church	10.50am
Sun 10th	*Haughley Hoofers Clog Dancers, Haughley Village Hall	7.30pm
Mon 11th	*Armistice Day Silence & Siren , Haughley Village	11.00am
Tues 12th	Bingo, Haughley Pavilion	7.00pm
Sun 17th	*Haughley Hoofers Clog Dancers, Haughley Village Hall	7.30pm
Wed 27th	SWT, Bats in Suffolk, Stowmarket Football Club	7.30pm
Sun 24th	*Haughley Hoofers Clog Dancers, Haughley Village Hall	7.30pm
Sat 30th	* Haughley Church Xmas Fair	10.00am
Sat 30th	*Haughley Christmas Tree Lights Switch on	3.00pm

DECEMBER

Sun 1st	*Haughley Hoofers Clog Dancers, Haughley Village Hall	7.30pm
Sat 7th	*Community Café, Haughley Village Hall	10.00am
Sat 7th	*Christmas at Wetherden	
Sat 7th	*Film Nights: "Hail Caesar", Haughley Village Hall	7.00pm
Sun 8th	*Haughley Hoofers Clog Dancers, Haughley Village Hall	7.30pm
Tues 10th	Bingo, Haughley Pavilion	7.00pm
Sun 15th	*Haughley Hoofers Clog Dancers, Haughley Village Hall	7.30pm

* See advert for further details



HAUGHLEY CHURCH CASTLE-THEMED COFFEE MORNING

Saturday October 12th

11 a.m.

Tapestry Display too !



**Vacancy at Crawford's Primary
School, Green Road, Haughley**

CLEANERS REQUIRED

Crawfords School requires cleaners to help us keep the school environment clean and ready for the children to learn.

Hours: 10 hours per week (2 hours per day Monday - Friday) during school term times (39 weeks per year)
Hours can be flexible but must be outside 7.30am - 4.30pm (i.e. early morning or early evening to suit successful candidates).

Salary : Grade 2 Point 2 (£11.59 per hour)
Duties will include: hoovering and mopping floors, cleaning toilets, wiping down table tops, dusting and sweeping.

Start Date: Monday 7th October or as soon after that as possible.

If you are interested in this post please contact Mrs Faiers for an application form.

01449 673253 or email
admin@crawfordsprimary.suffolk.sch.uk

HAUGHLEY VILLAGE HALL **COMMUNITY CAFÉ**



10am - 12 noon

Saturday 5th October

Hosted by Haughley Village Hall

Join us for freshly ground coffee, a selection of teas or hot chocolate and delicious homemade cakes and savouries.

Browse the stalls selling a variety of handmade items.

**PLEASE COME ALONG -
EVERYONE WELCOME!**

**HAUGHLEY CHURCH
CASTLE-THEMED COFFEE MORNING
Saturday October 12th
11 a.m.
Tapestry Display too !**



HAUGHLEY PLAYING FIELD 50/50 CLUB

The September Prize Draw of 2024

8.15pm, September 10th, 2024
in the Ron Crascall Pavilion

Witnessed by Members of the Bingo session
at 8.15pm during their meeting



**First Prize won by Barbara Willsher
Second Prize won by Francis Shaw
Third Prize won by Peter Parvis**

CONGRATULATIONS to all our Winners!

The December draw will be held at the Christmas Lights
switch on although this will be 30th November 2024.

Thirza Shaw, Administrator,
Haughley Playing Field 50/50 Club
Email: Thirza.shaw@haughleypc.co.uk
Text: 07786 375441

**HAUGHLEY
CHRISTMAS RAFFLE**

1st prize - £100
2nd prize - £50
3rd prize - Christmas Hamper

TICKETS ON SALE
At Haughley Post Office
from 14th October
and the Community Café
(1st Saturday of each month)

Draw to take place at the
Christmas Community Café
On
Saturday 7th December 2024



**DON'T FORGET TO
PUT YOUR CLOCKS BACK
1 HOUR ON
SUNDAY OCTOBER 27TH**

WETHERDEN HISTORY GROUP

OUR HOUSES & THEIR STORIES

Mini display
in the church
during the month of October

*Includes the history of the properties
we have researched, who lived in them
and related photographs*

wetherdenhistory.wordpress.com



AFTERNOON CREAM TEA/CAKES
RAFFLE & MORE

In aid of

MOTOR NEURONE DISEASE
(M.N.D.)

on

SATURDAY OCTOBER 19TH
2.00PM - 5.00PM

At
Haughley Village Hall

Please come along and show your support
for this worthy cause
Donations for the Raffle gratefully received

For information Contact Carol Sheppard
01449 672899 / 07706 755477

Email: carolsheppard01@gmail.com

Back By Popular Demand

WREATH MAKING WORKSHOP

HAUGHLEY VILLAGE HALL | IP14 3NS

PRICE: £55

PRICE INCLUDES ALL MATERIALS, HOMEMADE CAKE AND
TEA/COFFEE ON ARRIVAL, PLUS A HOMEMADE LIGHT LUNCH

CHOOSE ONE WORKSHOP DATE BELOW

THURSDAY 5 DECEMBER | 10-2PM
THURSDAY 12 DECEMBER | 10-2PM

BOOKING IS ESSENTIAL

HOW TO BOOK: CONTACT LIZ AT ECOULT@SKY.COM
MOBILE: 07745217566

Whats on at
your
Village Hall



COMMUNITY CAFÉ

Saturday 5th Oct 2024 - 10am–12noon

DON'T FORGET TO BUY YOUR TICKETS TO OUR
'Autumn Get-Together'

Saturday 12th October 7.00 - 11.30pm

DANCING & LIVE MUSIC

Featuring Savannah Love

***See separate ad for further details**

FILM NIGHTS - Doors 7pm for 7.30pm start
Admission £5 including refreshments

Saturday 5th October 2024 – **'Hampstead'** starring Diane Keaton, Brendan Gleeson, Lesley Manville, Jason Watkins, James Norton. Hilarious and heart-warming story of an American widow who finds unexpected love with a man living off-grid on Hampstead Heath when they take on developers who want to destroy his home.

Saturday 2nd November 2024 – **'Red Joan'** starring Dame Judy Dench, Sophie Cookson, Stephen Campbell Moore, Tom Hughes. Inspired by the KGB's longest serving British Spy. Joan Stanley lives in contented retirement until her tranquil life is suddenly disrupted. The dark secrets she's been hiding since her university days have been uncovered by M15.

Saturday 7th December 2024 – **'Hail Caesar'** starring Josh Brolin, George Clooney, Alden Ehrenreich, Ralph Fiennes, Jonah Hill, Scarlett Johansson, Frances McDormand, Tilda Swinton and Channing Tatum. An all-star comedy set during the latter years of Hollywood's Golden Age.

***To find out more about 'What's On' at Haughley Village Hall visit our
webpage at Haughley.org.uk**

St Mary's Church Wetherden

Linde cordially invites you all
to a Coffee Morning



on
Thursday 31st October
from
10.30 to 1200hrs

at
1 Crawford Close, Wetherden

There will be tea, coffee & biscuits
a bring-and-buy table & raffle.

Everybody is welcome:
the more the merrier.

 like us on Facebook - Wetherden Church



IS YOUR CHILD DUE TO START SCHOOL IN SEPTEMBER 2025?

You must apply for a primary school place through
Suffolk County Council. Go to:

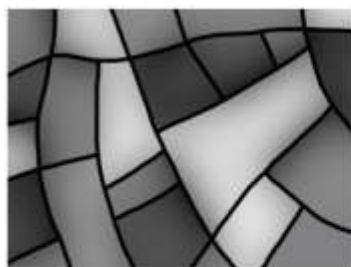
<https://www.suffolk.gov.uk/children-families-and-learning/schools>
for more information.

Applications open in September each year and close on
15 January.

AN INVITATION:

In order to make an informed decision, parents and their
children are invited to visit our school on **October 8th or
October 9th 9.30 - 10.30 am** for a guided tour of the
school. You will meet Mrs Ling the headteacher, and
see the staff and the children 'in action'. This is a great
opportunity to ask questions about what to expect when
your child starts school.

Please do ring Mrs Faiers
in the school office on:
01449 673253 to book a place.



St Mary's Church, Wetherden

Will be hosting an exhibition and demonstration of stained glass by:

Michele Russell of Churchouse Stained Glass

SATURDAY 12TH OCTOBER 2024

10am and 4pm

Entry is free, as are tea, coffee and biscuits

Programme:

11am Leaded Glass demonstration
1.30pm Foiled Glass demonstration
2.30pm Fused Glass demonstration

There will be an opportunity to purchase glass items that Michele has crafted,
including Christmas decorations and sun catchers.

Donations towards church funds will be gratefully received

For further details contact: Maureen Davis, 01359 241033
or email modaviis6@gmail.com

CRAWFORD EDUCATIONAL TRUST, (WETHERDEN)

Registered Charity 310361

The Trustees are able to award grants to individual residents of Wetherden of all ages, in order to help them with continued education, including those at Universities and Colleges of Further and Higher Education.

Residents of the Parish of Wetherden already involved in continuing education courses, or who are about to commence a course are invited to submit applications for the Academic Year 2023-2024.

The Trust also offers support to Crawford's CEVC Primary School and is happy to consider applications for funding from any other organisational group working for the benefit of the children and young people of Wetherden.

Individual and group requests for short courses or educational needs may be submitted at any time.

Application forms and further details may be obtained from:

Jan Tidmarsh (Awards Secretary)

Tel/Text: 07749809538

Email:crawfordtrust001@gmail.com

Completed application forms for the academic year should be returned to the Awards Secretary, by **30 November 2024**.

WETHERDEN HISTORY GROUP

SCHOOLDAYS IN WETHERDEN

Mini display
in the church
(changes Mon 30 Sep)

Includes the history of education in the village with related photographs, and collections of school & pre-school class photographs

wetherdenhistory.wordpress.com

Carpet Bowls

Come for fun!

We meet on Monday afternoons
from 2-4pm
£3 per session



STARTS OCTOBER 7 2024
UPSTAIRS AT HAUGHLEY PAVILION
(car parking available)

**No experience is necessary,
we will guide you.**

We can lend you bowls but please wear trainers.

**For further information please contact:
Wendy on 07773 972746 or**

HAUGHLEY HOOFERS NORTH WEST MORRIS



Like music? Like dancing?
Why not have a go at something a bit different?
A friendly group, good exercise and fun!

No experience needed and no obligation.
New dancers and musicians welcome
(portable acoustic instruments).

**Practice sessions from 29th September 7.30 – 9 pm
Haughley Village Hall, near Stowmarket.**

Ring Janet 07895 033545 / Gill 01449 673518
or email janetbauer3545@gmail.com to find out more.

Find us on Facebook Haughley Hoofers official page

STOWMARKET AND DISTRICT CAMERA CLUB



With the summer close season coming to an end, our members are busy taking their final photographs for the forth coming 2024/25 campaign. Our first meeting will be held on 9th September at the Community Centre at 19:30 hours. The Michael & Helen Lang Trophy for the best image from last season will be judged by Wayne Davey DPAGB BPE4.

For further dates and information please see our website
www.stowmarketanddistrictcameraclub.onesuffolk.net

New members are very welcomed. You do not have to be an 'Expert Photographer' all you need is a camera – any camera and a real interest in using it. Our members use DSLRs, mirrorless, compacts and bridge cameras.



If you are interested in becoming a member, please email
Stowmarketcc@outlook.com or visit our website.



Chairman: Mr Tim Hart
Secretary: Vacant

Vice Chair : Mrs M Buttle
Email: acsargent48@gmail.com

Do you know of a veteran in the Haughley area who needs our help? We provide lifelong support for the Armed Forces community - serving men and women, veterans, and their families. If so please get in touch via our website or via the email above.

Remembrance Services for Haughley

Friday 8th November 10.50am

- Schools service at St Mary's 10.50am
- Parents, grandparents and villagers are all welcome.
- Refreshments will be served from 10.25.

Sunday 10th November 10.50am

- Royal British Legion's Annual Service of Remembrance 10.50am at St Mary's
- Those wishing to parade to church are requested to be at the post office no later than 10.30am

Monday 11th November Armistice Day

- Service on the green 10.55
- Mr Palmer will as usual sound the siren to start the 2 minute silence followed by a short service .
- All are welcome.

Our socials take place at Haughley Football Club from 7.45pm on the **SECOND Thursday of EVERY month.** Come along and say hello .

To view our full calendar of events go to our website:

www.britishlegion.org/branches/Haughley

Or search **[Haughley Royal British Legion](#)**

www.thehaughleywarmemorial.wordpress.com

MONDAY 11th NOVEMBER



ARMISTICE DAY SILENCE & SIREN

As is tradition on Armistice Day, Monday 11th November 2024, Haughley will pause at 11 o'clock to remember all those who have fallen in Armed Conflict. The Parish Air Raid Siren will sound at 10.59 to indicate the approaching hour followed by the striking of the Church Clock at 11am. The Siren will then sound again at 11-02 to indicate the end of the Two Minutes. A short Service of Remembrance will be held on the Village Green following the Two Minutes Silence.

THE HAUGHLEY SOLDIER SILHOUETTES

The Haughley Soldier Silhouettes designed and installed by Kieron Palmer in 2019, will return to Haughley Village Green for the Season of Remembrance from the end of October to mid-November. Each Silhouette represents one of the 'Forty One Men of Haughley' whom left the village in the two World Wars to fight for our freedom and never returned. The Display of the Fallen will be in the window of Palmers Bakery. The Poppy Muffins & Biscuits will once again be on sale at Palmers Bakery in aid of the Royal British Legion.

The area is under 24 hour CCTV and Security Protection.

'WE WILL REMEMBER THEM'



HAUGHLEY PARISH COUNCIL MEETING HELD 17TH SEPTEMBER 2024

Public Forum – Concern was expressed at the apparent lack of Police presence during unauthorised encampment on the Playing Field - several comments were received that Parishioners felt there was insufficient response or visibility during this time. This subject had been raised at a public meeting with the Police and Crime Commissioner and the Chief Constable.

A resident suggested that more information on the No Mow May results be made available, including actively involving the community by sharing data on the success and types of plants and insects at key points like Old Street and show how the project is benefiting wildlife.

Planning – The Council considered a Planning Appeal against a refusal for an Application for a Lawful Development Certificate for an Existing Use or Operation or Activity relating to Bridge Field Paddock. The Council agreed comments in addition to those submitted at Planning Application stage which will be submitted to the Planning Inspectorate.

In line with Mid Suffolk District Council planning policy, a Biodiversity Policy and asset register was adopted to assist with developing a baseline for where there are sites of interest and the potential to improve biodiversity. This will help us to respond when applications are received as most developments now are required to improve biodiversity by at least 10%.

Unauthorised encampment on the Playing Field – many lessons have been learned and Haughley Parish Council is working with authorities to develop training for Parish Councils in Suffolk and Norfolk. The main issue raised was that residents feel let down by the lack of police action with anti-social and criminal activity. Many expressions of thanks were received for the work that went into dealing with this situation.

The Quarry visit and planning meeting has been postponed until October due to further documents having been received.

We are advertising for a new clerk. Claire has secured what is effectively a promotion and will be leaving us at the end of October. We will miss Claire and we are grateful for all the support she has given us as councillors as well as the passion to support our Parish. **Please contact the Clerk or the Chair for an informal conversation or further information.** Closing date for application 17th October 2024.

Full minutes are on our website and our next meeting is:
Tuesday 15th October 2024 7pm.

Chairman: Gerald Brown (07969 654520) - gerald.brown@haughleypc.co.uk
Clerk (01449 677005) - clerk@Haughleypc.co.uk

September's well researched talk "Every Picture tells a Story" was given by one of our own members, Sally Green. With a reminder that art is provocative - its political, religious or social commentary often sparks controversy and debate -



Sally took us through many different periods of art, starting with the Renaissance. She compared the approaches of two 15th C Italian artists in painting The Annunciation and their use of symbolism, colour and texture to tell the story. We looked at paintings

by Seurat and Renoir, French Impressionists, and the techniques they used to give their own interpretation of French lifestyle in the 1880s. Some of Hogarth's and Constable's works came next, followed by some of the harsher pictures from the 1930s reflecting social injustice and economic hardship. Sally ended by highlighting the environmental impact of street artist Banksy's work illustrating his picture of "Snow". A most stimulating and enjoyable talk.

September 5th saw us taking over the Blue Vintage Tea Rooms in Lavenham for a second visit. This time it was a lovely mix of savoury and sweet treats for afternoon tea. A really good spread and plenty of "doggy bags" to bring home.

It was our turn to do the baking on September 7th when we hosted the Community cafe. Knowing how well this event is supported by villagers, we provided a wonderful array of cakes, scones and pastries and of course the opportunity for "take outs".

Our lunch club members are off to The Victoria in Thurston this month. Our next group outing is on October 7th, when some of us will be attending (and singing at!) the Neil Diamond concert- Song Sung Blue - at the Regal in Stowmarket. The singer, Stephen Amer, gave a very lifting talk to Haughley WI earlier this year. This inspired two of our members to set up the Community Singing for Wellbeing group which now successfully runs twice a month in the Village Hall.

Our next meeting is on October 2nd at 7.30 with speaker Margo and her hearing dog Linus. Anyone thinking of joining Haughley WI is very welcome to join us.

Julia Brook. Jane Thompson.

**Share your memories and photos of Haughley...
Come along for tea and home-made cake
on the afternoon of Wednesday 9th October 2024.**

The WI is hosting a one-off group, of women and men, in the Green Room at the Village Hall to capture memories of Haughley from the last 100 years.

In October 2025, Haughley WI will celebrate its Centenary. As part of the celebrations next year we are hoping to hold an historic Exhibition of Haughley WI in the context of Haughley life and the wider picture of England over the 100 years. We are also looking to write a short book.

We have been visiting the Archives at Ipswich but we need to bring it to life through your memories and photos.

**If you have memories to share, please join us.
To book your place, call Julia Brook on 07774 560507**

VACANCY

CLERK AND RESPONSIBLE FINANCIAL OFFICER (RFO)

Where: Haughley, Suffolk

Working arrangements: 12 hours per week, with flexible scheduling for specific days and times. Some evening work will be necessary, and additional hours may occasionally be required with prior agreement

Location: Working from home, some village visitation

Job Summary

Haughley Parish Council is seeking applications for the permanent, part-time position of Clerk and Responsible Financial Officer. This is a work-from-home role, with the requirement to attend monthly council meetings.

The Clerk will provide essential administrative support to the council, assist the Chair in managing meetings, and offer advice on policy and legislation to facilitate effective decision-making.

We are looking for a candidate who is passionate about improving the community, with a strong sense of commitment, enthusiasm, and a willingness to learn. Reliability is key, and mentoring will be provided to the successful applicant.

While a CiLCA qualification, experience in local government, and living in or near Haughley would be advantageous, they are not essential. If you feel you meet most of the criteria, we encourage you to apply or reach out for further information.

Key Responsibilities

- Preparing agendas, attending meetings, taking minutes, providing advice to Councillors on procedural and legal matters, and ensuring actions are followed up, while continuously reviewing policies and procedures.
- Managing all incoming and outgoing correspondence, serving as the primary point of contact for residents.
- Overseeing the Council's finances (Precept £59,000), using the Parish Accounting system, Scribe, to handle tasks such as invoice payments, VAT reclaims, budgeting, bank reconciliations, financial monitoring and reporting, preparation for internal audits, and completion of year-end procedures.
- Organising and submitting responses to planning applications.
- Uploading statutory information to the village website and notice boards, with occasional use of social media and other communication channels.

Pay

Pay Scale: LC2 - will be awarded depending on qualifications and experience.
Pro-rata pay based on hours worked.

We also pay a working from home allowance - £26/month.

Other reasonable expenses including mileage will be reimbursed subject to approval.

How do I apply

Please contact the Clerk or the Chair for an informal conversation or further information.

Chairman – Gerald Brown – gerald.brown@haughleypc.co.uk

Clerk - clerk@Haughleypc.co.uk

Applicants are requested to email an up-to-date CV to the Chair and CC the Clerk. Our closing date for applications is 17th October 2024 with interviews being held on **evening of the 23rd October 2024**.

We are proud to be an Equal Opportunities employer, so please let us know if there are any adjustments we can make in the interview to support you.

NEWS FROM YOUR DISTRICT COUNCILLORS

Simpler recycling Proposals are before Mid Suffolk cabinet for the new waste collection service. These include weekly food waste collections from 2026 as well as accepting more recyclable waste with the addition of a second recycling bin for every household. This will mean that the general waste black bin will not fill up as quickly, and any changes to the collection cycle will be explained to residents as part of a Suffolk-wide communication ahead of the 2026 roll-out.

Stowmarket town centre regeneration MSDC have approved creation of a £1.5million fund for enhancement of Stowmarket town centre. The first step will be working with landlords to bring under-utilised properties, including empty shops, back into use. Potential occupiers will then be supported to find a location – opening the door for new businesses, pop-ups and other ventures looking to launch their first store or space. The fund is now open for applications/enquiries and information can be found at Stowmarket Town Centre Gateway Fund - Mid Suffolk District Council - baberghmidsuffolk.com

Heart of Suffolk Big Weekend This is a new event to be held on the weekend of 19th to 20th October. It will shine a spotlight on the culture, leisure and visitor attractions of the area. It incorporates a prize draw which residents can sign up to enter between 16th and 30th September.

Conversations with residents We are currently carrying our consultation in the form of conversations with residents to find out more about thoughts and ideas on how the area should be developed or improved. This can be either new ideas or ways in which the council could assist with resident led activities already taking place.

Locality grant awards are still available. Do contact one of your District Councillors if you would like to apply.

Cllr Rachel Eburne

Rachel.Eburne@midsuffolk.gov.uk

Tel: 01449 673311

Cllr Janet Pearson

Janet.Pearson@midsuffolk.gov.uk

Tel: 01449 678788

SUFFOLK TREE WARDEN'S VISIT TO GALLOWSFIELD WOOD

On 13th July Haughley hosted a meeting of a large group of Suffolk Parish Tree Wardens at Gallowfield Wood. The wardens were keen to discover the history of the Wood, and the original planting plan for the Arboretum as well as seeing examples of some rare trees.

Gallowfield Wood dates back to 1987 when it was planted as an Arboretum within a traditional woodland collection of most varieties of East Anglian trees. There is also an area of older trees which were part of the previous field edge. The site was originally a picnic site created in 1985 adjacent to the newly built west carriageway of the Haughley Bends on the A45 (now A14).

Over the last couple of years, a small but growing group of people in Haughley have taken a practical interest in caring for Gallowfield. The main rides have been coppiced and widened to create more open woodland glades to increase the diversity of plant and birdlife and this work was appreciated by the visitors. However, the walk around the Wood revealed several smaller pathways which have become too narrow because and now need cutting back.

The Rides

Originally the Suffolk County Council Countryside Team wanted to have the rides 30 yards wide but they were required by the grant-giving funders to reduce them to 20 yards. The effect of narrow rides can now be seen. Several areas have overhanging branches and there is a lack of space for shrub and scrub growth in the margins under the trees. Unusually, the trees were planted only 2 metres apart to encourage them to grow tall and straight which can increase their commercial value. Some major thinning, including the felling of some larger trees is needed to create more open glades to allow more light to get to ground level allowing a wider variety of flora to benefit birds and insects. We are in the process of getting quotations for this work to be carried out during the winter.

Wild Service Tree

The Tree Wardens were keen to see examples of the rare Wild Service Tree which has a "maple like" leaf and stunning flowers in Spring. The trees are currently surrounded by 15ft Silver Birch trees and were found near the sign for the Downey Birch & Crab Apple just off the bottom ride. "Halo thinning" was suggested around the few examples of this tree to give it greater prominence.

Black Poplar

Gallowfield has several examples of Black Poplar which is now a rare tree in the landscape. These were planted about 35 years ago and can be found along the fence near the Notice Board and also at the bottom of the main ride leading down towards the Travel Lodge.

Elm trees

We have some mature Elm trees at the bottom of the main ride (from the Notice Board) which have, so far, resisted the worst effects of Dutch Elm disease, a kind of fungus. It was recommended that they should be coppiced as this will produce shoots and suckers which can grow into mature trees. These may then suffer from Dutch Elm disease but some may survive which could increase the chances of a hybrid developing which could be resistant to the Elm tree fungus.

The Meadow

The Meadow was much admired and pyramid orchids, scabious, yellow rattle, lady's bedstraw, bugle and birdsfoot trefoil etc, were still in flower. There were some questions about our plans for dealing with the early signs of bramble and scrub which we will consider when we commission the next cut of the meadow. The visit provided a useful opportunity to see Gallowfield from the perspective of an informed visitor. It also confirmed the value of some of the work that has been done in recent years and indicated that some more substantial thinning and felling is needed to enhance Gallowfield for all of us who enjoy its unique quality and well as for the birds and flowers which share it with us.

The working group will meet again in October, to join us please contact me on 07745373467 David Evans

St Mary's Church, WETHERDEN

REMEMBRANCE SERVICE

Sunday 10 November – 10.50 am

A service when we remember those mentioned on our War Memorial.

BUT perhaps you would like to remember a family member who also lost their life in a war.

OR perhaps you would like to remember a family member who has now passed away but served in an area of conflict.

FOR MORE INFORMATION CONTACT:

Pat Tuffin

Tel: 01359 240396

Email: pattuffin@gmail.com



HAUGHLEY CHURCH CHRISTMAS FAIR

**Saturday November 30th
10 till 12:30 a.m.**

Would you like a stall?

Contact Josephine.Gibson@talk21.com





FamilyTrusts

— WILLS, TRUSTS & LPAS —

I'm Ant Chambers, I own FamilyTrusts - specialising in Wills, Trusts and Lasting Power of Attorney.

I know some aspects can be confusing. Many people are worried about losing their family home to care-home fees, while others are concerned about inheritance tax.

Why not book a free, friendly chat where I can help you think things through with no obligation.

And for your peace of mind, if you do decide to move forward, you'll be dealing with me personally at every point. Advising, drafting and signing.

 01245 974948
07581 553698

 contact@family-trusts.com

 www.family-trusts.com

CHECK THE WEBSITE FOR COMPETITIVE PRICING



HAUGHLEY AMATEUR THEATRICAL SOCIETY

IT'S

PANTO TIME

AGAIN...

JOIN US THIS YEAR AS WE ARE LOOKING FOR...



WE ARE HAVING AN INFORMAL GET-TOGETHER

MONDAY 7TH OCTOBER

IN THE GREEN ROOM AT HAUGHLEY VILLAGE HALL



EVERYONE 16+ WELCOME



WE REHEARSE ON MONDAY NIGHTS AND MONTHLY ON A SUNDAY

MATINEE AND EVENING PERFORMANCES ON

FEBRUARY 21ST AND 22ND

FOR MORE INFORMATION, CONTACT STUART ON 07876 874962

Christmas at Wetherden

Saturday 7th December

WETHERDEN
VILLAGE HALL

Christmas MARKET

LOCAL CRAFTS & PRODUCE
FESTIVE GIFTS & DECORATIONS

10AM-3PM FREE ENTRY

SUPPORT LOCAL



MAYPOLE INN

MULLED WINE

Enjoy a glass of mulled wine or
other festive drinks

FROM 11AM

SUPPORT LOCAL

WETHERDEN
BAPTIST CHURCH

Santa SEARCH

HELP SANTA FIND HIS GIFTS
Follow the clues around the village
& get a chocolate treat at the end

10AM-12PM || £1.50 PER CHILD

HOT & COLD DRINKS
CAKES & CRAFT MAKING





British Beauty
salon

The place for self-care in Suffolk.

Massage
Facials
Holistic Therapy
Lash Treatments

Tinting
Pedicure
Manicure
Facial Waxing

Upstairs in, The Crown, Church Road, IP14 4BQ

07301246223

@britishbeautysuffolk_

info@british-beauty.co.uk

www.british-beauty.co.uk

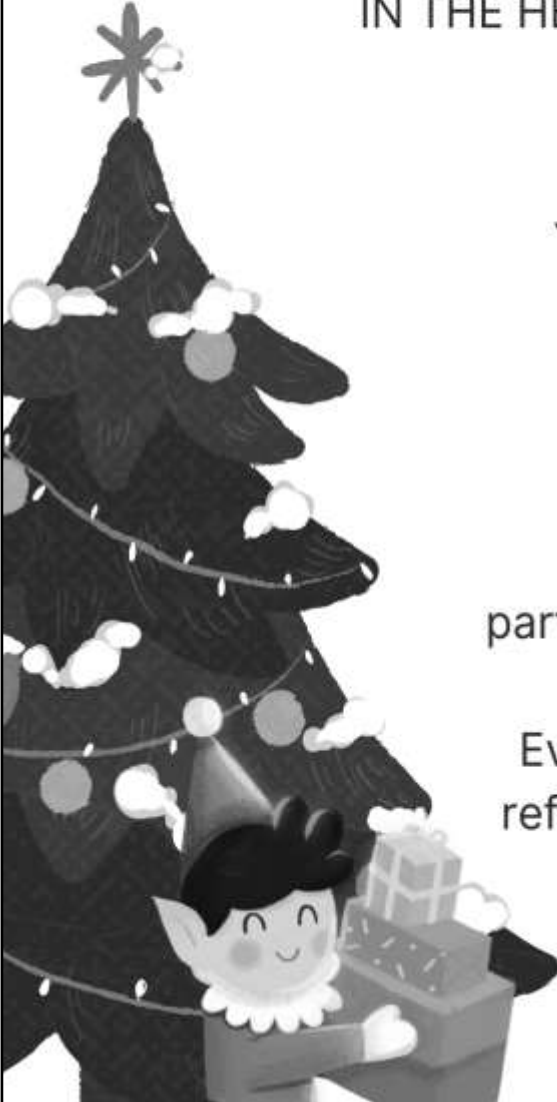


SAVE THE DATE

A PARISH EVENT

‘HAUGHLEY CHRISTMAS TREE LIGHTS SWITCH ON’

SATURDAY 30TH NOVEMBER 2024 | BETWEEN 3-5PM
CENTRED AROUND HAUGHLEY PARISH VILLAGE GREEN
IN THE HEART OF THE VILLAGE



You, your families and your friends are cordially invited to participate in the annual Haughley Christmas lights switch-on event.

This lovely family event is a traditional part of Haughley’s build up to the big day.

Everyone is welcome to come and enjoy refreshments, seasonal music, traditional entertainment and visit the stalls.

We look forward to seeing you there.

QUIZ NIGHT

In aid of St Mary's Church, Haughley



Saturday 26th October

7:30pm

Haughley Village Hall

£5 per head - max. 6 per team

Bring your own snacks

Tea and Coffee provided in the interval

To reserve a table for your team or to book a seat and join a team on the night, email

haughleyquiz@btinternet.com

Or: call Jan or Gordon on 01449 737247



Haughley Playing Field and Pavilion News

King George's Field, Haughley charity No. 304761

Fundraiser 31st August – THANK YOU! THANK YOU! THANK YOU!

Thank you to all involved and all you wonderful people that supported and bought raffle tickets. Thanks to Julie Zarkos from HUFC and her contacts for organizing and donating prizes and Carly Banthorpe Youth Football for all the help on the day along with HUFC committee. A whopping £1610 was raised. A further £400 was raised by Ruby May through the go fund me page and £225 from Brittany Cole through a raffle at her business Beauty by Brittany. This will be the starting pot for new security at the Playing Field entrances. This will help us apply for grants for any additional costs. New Security plan – We are focusing on anti-ram telescopic bollards.

September 50/50 draw winners – We held the draw at the September Bingo session. First prize £50 Barbara Willsher, second prize £30 Francis Shaw and third prize £20 Peter Parvis.

New Pilates Class Monday mornings at 9.30am starting 9th September – Through the Active Suffolk support and following the survey earlier this year, we have secured funding to start a Pilates class. First session is free, then half price for the following 6 weeks, just £5 while the class gets established.

For further details and to book a space please contact Kelly Clayden kellyclayden@googlemail.com or Henry Lane from Active Suffolk henry.lane@activesuffolk.org or 07342002024. All levels of ability catered for.

The Pavilion regeneration project – We have applied to the Parish Council for a CIL grant to start the funding process. If successful, this will help us seek further grants, also enabling us to get professional support for technical drawings.

Advertising board at the entrance to the Ron Crascall pavilion. If you would like to advertise your business, please contact us via the parish clerk. Clerk@haughleypc.co.uk. The charge will be £250 a year for an A5 size advert, and the money raised will help the upkeep and general maintenance of the Pavilion, playing field and equipment.

Clubs and Regular activities at the Playing Field & Pavilion

- **Pilates** – Kelly Clayden kellyclayden@googlemail.com
- **Salcerbox** – Sally Sally Faiers sally.faiers@outlook.com 07907115259
- **Mondays 6.30 – 7.30pm**
- **Yoga** – Bethany serenityyogabethany@outlook.com **Wednesdays 9.30-10.30am** Upstairs function room.
- **Heels Your Soul** – Paige Taylor heelsyoursoul.dance@gmail.com
Wednesday evening classes from 6.30pm
- **Bingo Every second Tuesday of the month, 7pm for 7.30pm eyes down. This year's dates are 8th October, 12th November & 10th December.**
- **Royal British Legion** meet every second Thursday at the Pavilion.
- **Beavers, Cubs & Scouts** Carly Banthorpe 07976294616 or Richard Stacy 01449 673311.
- **HUFC** –Senior football contact – Lee Forsdyke 07472902302
- **Haughley Youth Football** contact – Carly Banthorpe 07976294616
- **Bowls Indoor or Outdoor** - contact Peter Mead 07845068679 Indoor Bowls Wendy 07773972746

There are three rooms for hire at the Pavilion

- Upstairs Function room –Thirza Shaw – trtinker@aol.com or 07786 375441
- Haughley Football club bar room – Ian Wilkinson 01449 773399 or Lee Forsdyke 07472902302
- Scouts Hall or folding table & chairs – Richard Stacy 01449 673311.

SHOPPING ONLINE - THE PERFECT OPPORTUNITY TO SUPPORT US WITH NO COST TO YOU.

<https://www.easyfundraising.org.uk/causes/kinggeorgefldhaughley/>

Or go to www.easyfundraising.org.uk and select King George's Field, Haughley as your chosen charity.

Thirza Shaw, Chairman & 50/50 Club Administrator, Email trtinker@aol.com Phone 07786375441

Dogs are welcome at the playing field, however, please keep them on their leads and pick up your dog's poo.

St Mary's Church, WETHERDEN



During October we are supporting the
'Link to Hope' Christmas Shoebox Appeal
We will be filling shoeboxes with some basics and some treats to go to the poorest people living in Romania, Moldova, Ukraine & Bulgaria

Each shoebox will be for a FAMILY or for an ELDERLY PERSON living alone

Information about this appeal will be available at our **MORNING WORSHIP** service, **11 am on Sunday 6 October**



We then have until the end of October to fill our boxes

WETHERDEN VILLAGE HALL



There were just under 7 tables in play at our Whist Drive held on Friday 13th September

We have been shuffling through future dates, and our next Whist Drive is well and truly on the cards for Friday 11th October at 2pm. Why not stay ahead of the pack, and come along???? You will be sure of a warm welcome!



Mid Suffolk

Suffolk branches join forces to mark 85 years of Citizens Advice

In September, representatives from the five local Citizens Advice offices across Suffolk met to celebrate the 85th birthday of Citizens Advice. Now a national institution, the first 200 Citizens Advice Bureaux opened on 4 September 1939, the day after war broke out. The network grew at one stage to over 1000 local offices but following consolidation across the country now stands at around 250 separate offices.

Between the five local Citizens Advice charities in Suffolk, in 2023-2024 they helped 28,921 people to address 133,270 issues. This resulted in £8.5 million income gained for clients, and over £9 million of debt managed effectively.

All the Suffolk Citizens Advice offices rely heavily on volunteers to work alongside their paid teams, and a total of 82,070 hours were donated by Suffolk volunteers last year.

As independent charities who are not directly funded by central government, all five local Citizens Advice offices (LCAs) are constantly under pressure for funding, applying for grants and project funding from a wide range of organisations including all the local councils, the Suffolk Community Foundation, trusts and private sector organisations. Every £1 of funding has been shown to deliver £26.12 in public value.



Over the years, there have been different trends in the types of advice most sought by clients, housing issues and debts often being high on the list. A strong reminder that Citizens Advice is as important and relevant in 2024 as it was when it was launched 85 years ago.

Citizens Advice Mid Suffolk can provide in depth advice on this issue and much more, including debt, finances, employment, benefits and family/relationships. You can contact them by phone on 01449 676060, visit in person at Milton House, 5 Milton Road South, Stowmarket IP14 1EZ or use the contact form at midsuffolkcab.org.uk/contact-us. Opening hours are Monday-Thursday 9.30am – 3.30pm and Friday 9.30am – 12.30pm.

REMEMBER



the copy deadline is for the November issue is

Wednesday October 16th 2024

Submit to:

The Editor, Oulton Cottage, The Folly, Haughley

Or (preferably) by email: haughleynews@btinternet.com



70s & 80s Night



WITH ALL UK BEST DISCOS



SATURDAY 30 NOVEMBER

7PM - 11PM

HAUGHLEY VILLAGE HALL, IP14 3NR

RAFFLE & NIBBLES PROVIDED

BRING YOUR OWN DRINK.



Tickets £10 each
Julia Brook 07774 560507
jsb.brook@btinternet.com



FANCY DRESS ENCOURAGED.

In aid of Haughley WI

ELMSWELL HISTORY GROUP

Thank you to all our visitors at Sept's **ElmsFest** fair, at which we had joint winners in our village photo competition who have each won free entry to one of our new season's talks. Congratulations, and we look forward to welcoming them both in the near future.

Neil Langridge's September talk on *Hop Cultivation in Suffolk* gave us a new and unexpected insight into local hop growing from the 16th century, this being an appropriate time of year as hops are harvested in late-September. Before 1520, the drink of choice for the general populace was ale (made *without* hops) which was safer than water because it was boiled, but Northern European immigrants brought over their preferred beer and the hops to make it. Various contemporary writers described this development, and there followed a short-lived "hop mania" in various "get-rich-quick" schemes. The first mention of hops grown in Suffolk was in 1594 when Combs Hall had a hopyard meadow, and Cambridge's medieval Stourbridge Fair sold wool and hops. Hollingsworth's 1844 "History of Suffolk" mentioned the hamlets of Dagworth and Old Newton having hop-grounds in 1738 or earlier; Dagworth still has a former hop-drying kiln (1912), now converted into a residential dwelling. Neil also found evidence of a hop meadow on the western side of Elmswell. Stowmarket's Hop Fair took place from 1826, but often hop fields were converted into osier beds to grow willow for local basket making. There is still Hopyard Lane in Haughley and Stowmarket's Hop Pole Inn (1861-1925) which had a bonded warehouse with a siding from the main railway.

HERITAGE OPEN DAYS – Some of our members took advantage of these free regional events last month and visited:-

Stowmarket – St Peter & St Mary's Church, clambering up the ornate Victorian spiral staircase to the bell tower to view and hear the magnificent new and refurbished set of ten bells, one of which has been there since 1450.

Ipswich – Christchurch Museum for a guided tour of this wonderful building, led by Tudor-costumed guides.

Norwich – (a) Pull's Ferry on the River Wensum with its 15th-century watergate, which was the route for the stone used to build Norwich Cathedral along a canal specifically built by the monks for this purpose; (b) Strangers Hall, dating back to 1320, once home to Mayors and Magnates and with a labyrinthine suite of period rooms, 14th-century undercroft and Elizabethan knot garden, this amazing building is now full of enthralling objects and art; (c) Maddermarket Theatre with its Elizabethan-style stage, set within the winding Norwich Lanes; and (d) 14th-century Britons Arms pub on the delightfully cobbled Elm Hill.

Our **next talk** at the Wesley Hall, 7.30pm on **10th October**, will be Barbara McElroy's "*Framlingham, Castle on the Hill*". As a Framlingham resident, she is well placed to delight and inform us on the town's impressive castle with its long and fascinating history. Do join us then.

For further information about our History Group, please visit our website – www.elmswell-history.org.uk – or contact our Secretary, on 01359-242601

MINISTRY TEAM LETTER

Autumn us now upon us but I have been reflecting back over the summer months. We have been delighted to share in celebrating weddings and baptisms across the benefice. We have welcomed so many people into our lovely churches. We have also had the privilege of conducting a number of funerals and thanksgiving services. It is always such a joy to share these special times with families and friends.

We also join together every Sunday to give praise and thanks to our wonderful God. During September we had our Harvest services, we welcomed friends from across the villages and the school into the church as we celebrated the work of our farmers and gave thanks for the harvest. Many donations were made to the Stowmarket food bank , such a vital resource in these hard times for some people.

The church in Wetherden and Haughley is YOUR parish church and we are here for YOU, to help you celebrate those special occasions.

At the beginning of November we will have a special Thanksgiving and Memorial Service in Haughley Church where we remember loved ones who have died either recently or some time ago in Haughley and Wetherden. Letters of invitation will be sent to the relatives of recent funerals but everyone is welcome to this service. It will be on Sunday 3rd November at 5 pm. There will also be a similar service at Stowupland at 3 pm if you are not able to make the service at Haughley but would like to attend.

If you would like more information about our regular services or would like to plan a special service please do get in contact.
Blessing and Prayers to you all.

Revd. Alison Roberts
October 2024.



**WINNER OF HAUGHLEY CHURCH'S
MONTHLY £40 DRAW:**

Paula Shave

The £40 draw is held in the last week
of each month.
Phone 774657 if you would like a ticket:
£15 for the whole year.

Proverbs 3:6

Remember the LORD in everything you do, and he will show you the right way.

A new Year is often seen as 1st January, but a new year is a time for change and moving on, and can be said very much about this time of year. Children and young people have moved up classes, or even onto a new school or college, or even onto work.

The weather is changing and getting colder, the nights are drawing in, the leaves on the trees are changing colour, the fields are changing as the harvest has been gathered in, even we ourselves have changed maybe a few more grey hairs, a few more laughter lines.

Change is something that seems to happen daily, and some things we don't always have a choice over, other things we have the choice to change them ourselves.

In the life of a Church, changes are always happening, even we may not notice them, it may be new people coming into Church, and the fact that they are just there will slightly alter things, other changes may be out of necessity, because we do not have the people of finances to do the things we used to, or someone simply has a fresh idea.

Change may not always be welcome but I feel as a Christian that it helps our Faith journey, we may not like what happens, but if we understand why that is, it helps us to move on in our Christian lives, so give change a chance you never know you may like it, grow in Faith, and as the hymn by Sydney Carter says:

1 One more step along the world I go,
One more step along the world I go.
From the old things to the new
Keep me travelling along with you.
And it's from the old I travel to the new.
Keep me travelling along with you.

5 You are older than the world can be,
You are younger than the life in me.
Ever old and ever new,
Keep me travelling along with you.
Chorus

Robert

PARISH CHURCH SERVICES FOR OCTOBER 2014
Benefice of Haughley with Wetherden and Stowupland

Date	Haughley	Wetherden	Stowupland
Sun 6 th October	11.00 am Sunday Praise	11.00 am Morning Worship	No Service at the church. We join with the URC at 10.30 am for their Harvest Service
Tues. 8 th Oct	5.00 pm Pizza Team		
Sun. 13 th Oct	11.00 am Parish Communion	11.00 am Sunday Praise	9.30 am Worship for All
Sun. 20 th Oct	11.00 a.m. URC led service	11.00 am Worship for All	9.30 am Morning Worship
Sun. 27 th Oct	9.30 am Communion Service (Book of Common Prayer - said service)	11.00 am Parish Communion	6.30 pm Parish Communion

SONGS OF PRAISE AT MERE VIEW

Monday 7th October at 2.30 pm
 In the Lounge at Mere View, Thompson Close, Haughley.



Former local boy and Oxford historian Professor Sir Diarmaid MacCulloch has been awarded an honorary doctorate degree by the University of Suffolk. His dad was Revd. Nigel MacCulloch, former rector at Wetherden and Haughley churches. The University have given a similar award to Ipswich Town manager Kieran McKenna. Diarmaid and Kieran make a great team!



SMALL ADS

Deadline for the November issue is Wednesday October 16th 2024

- BOSCH CORDED POWER TOOLS. In original boxes in perfect working order. PST 54E Jigsaw. PWS 6-115 Angle grinder. PSS 240 AE Flat sander. £25 each STANLEY No.4 Plane. NEW £35. STANLEY hand drill NEW £18. 01449 675007/ 077695 15526
- Gents cycle {Rayleigh} black good order, £50 01449 673790

All small Ads, max 20 words, should be sent to:

Email: haughleynews@btinternet.com

or

Anne Ardley, Oulton Cottage,
The Folly, Haughley IP143NS

The following Terms and Conditions apply to all ads in this section: The Parish News takes no responsibility for the quality, safety, condition or true value of the items placed in the Small Ads Section. The Parish News Editors maintain the power of veto on the suitability of the Adverts. Ads will be placed on a first come first served basis and held chronologically for space in the magazine.

Please note that the 'Small Ads' service has been introduced for the benefit of Haughley and Wetherden residents. Commercial advertisers may advertise in this section on payment of a fee, only if there is no advertising space available elsewhere in the Parish News.



SUFFOLK

HOME RENOVATIONS LTD

OVER 20 YEARS EXPERIENCE
SPECIALISING IN:
BESPOKE BUILDING PROJECTS
RENOVATIONS & CONVERSIONS.

FULLY LICENSED AND INSURED

OFFICE: 01449 516617 MOBILE: 07889 960758

suffolkh Renovations@gmail.com

www.suffolk-home-renovations.uk



FREE ESTIMATES

AVC

Architectural
Consultant



07818 417964

office@avcarchitectural.co.uk

Planning
Building Regs
Structural



BASE
COUNSELLING

*Integrative counselling and psychotherapy
Couples Counselling*

with Hayley Gissing
BA (Hons)

07570 447966

basecounsellingsuffolk@gmail.com

PLUMBING

For All Your Plumbing Requirements

Large or Small

Central Heating and Domestic

Contact: Andrew Snowling

Stowmarket (01449) 675440



Roofing Contractor

B.G.R. provides services covering all aspects of roofing work
With over 16 years of experience one of our
Team will be happy to help.
No job too big or small, call today for a free quotation

- Roof repair and maintenance
- Re roofs
- New roofs
- Fibreglass flat roofs
- Gutters
- Leadwork
- Fascia and soffit
- Re pointing

07908551127

b.grimwood.roofing@gmail.com



@b.g.roof



BusyB

Quality Dressmaking
and Alterations

A professional bespoke service
from a friendly local dressmaker

Tel: 07753 177703

busyb.alterations@gmail.com

www.busybev.co.uk

Find me on Facebook as 'Bev Busyb'

or Google Maps – search for 'BusyB'



All forms of landscaping and garden maintenance undertaken

- Patios & paving
- Fencing
- Garden edging & retainers
- Decking
- Shed bases
- Grass cutting

For a free quote contact
07931089125

Contact: jblandscapes@gmail.com

Rushbrook's

— CHIMNEY SWEEP —

'Guild of Master Chimney Sweeps' registered Chimney Sweep, providing professional service to ensure your chimney is clean and your home safe.

Services include:

- Open fire, wood burners and Inglenooks swept
- Stoves checked and serviced for efficiency
- Birds nest removal
- Safety Inspections and Smoke Tests
- All work fully insured & certificates issued.

Contact Robert Rushbrook email:

rushbrookschimneysweep@hotmail.com

Tel: 07581 352772 or 01449 612296



MP Plumbing & Heating



OIL BOILER ENGINEERS

From Toilets & Taps To Servicing & Installation

Matthew



**TRADING
STANDARDS**

APPROVED



07901 712 260



@PlumbingAndOil



PROUD MEMBERS OF

Checkatrade.com
Where reputation matters



*From Toilets & Taps
To Servicing & Installation*





Domiciliary footcare home visits:

Nail trimming	Fungal nail
Corns	Verruca
Athlete's foot	Thickened nail
Ingrown toenail	Diabetic footcare
Callus (dry/hard) skin removal	

-  Elizabeth Stiff MCFHP MAFHP
Foot Health Practitioner (FHP)
-  07546 043753
-  info@heeltotoe.co.uk
-  heeltotoe.co.uk
-  facebook.com/heeltotoe.co.uk

BLOMFIELD MAINTENANCE

Gas and Heating Services

BOILERS & HEATING SYSTEMS Service & Repair	COOKERS & HOBS Installation Service & Repair
--	---

LANDLORD REPORTS

Providing local professional gas services for over 30 years

01359 241454 07889 616937



134842

Sji greengrocers Ltd.

Fruit, vegetables and salad delivered fresh to your door every week.

Fresh tasty produce.

Free weekly delivery (on orders over £7), every Wednesday.

No need to be in.

Mixed boxes, build your own box & business to business.

See website for further information.

www.sjigreengrocers.co.uk

01449 257491 / 07786 165402

Sandjirons@hotmail.co.uk

KH

Kevin Hollings KITCHEN STUDIO

Unit 14 Lodge Works,
Stowmarket Road,
Old Newton,
IP14 4EE

01449 257160

info@kevinhollingskitchens.co.uk

www.kevinhollings.com





M A Heating Services Ltd



- * Oil, Gas and LPG boiler servicing, replacements and repairs
- * Repairs to central heating system faults i.e. pumps, programmers and cylinders
- * Servicing and repairs to Rayburn, Aga Stanley and Esse
- * Landlord's Certificates

Telephone: 01379 783427

Wickham Gate, High Street, Gislegham, Suffolk, IP23 8JD



63 Old Street, Haughley, Nr Stowmarket
Tel: 01449 673366

58 Barton Road, Thurston, Bury St. Edmunds
Tel: 01359 232200

OPENING TIMES

Monday - Friday 8.30pm - 6.30pm
 Saturday 8.30am - 11.30am - Haughley Surgery
 Saturday 12.00 - 3.00pm - Thurston Surgery

Please telephone to make an appointment
 Or visit our website:
www.haughleythurstonvets.co.uk

GRAHAM MOORE ELECTRICAL Ltd

For all your electrical needs

For a friendly and efficient service
call Graham on

Tel: 01449 616946 Mobile: 07867 560357

Old Newton

FREE ESTIMATES • ALL WORK GUARANTEED



BREAK
FREE
 FROM YOUR
PAIN

Have you been suffering with:

- Neck pain
- Whiplash
- Back pain
- Sports injuries
- Shoulder pain
- Repetitive strain
- Postural problems
- Wrist & hand pain
- Sciatica
- Hip, knee or ankle pain
- Neurological disease
- Work related injury
- Arthritis

Come to see our expert physio team
for a **Speedy Recovery**

Call: 01359 241304

Online: bit.ly/BookaPT



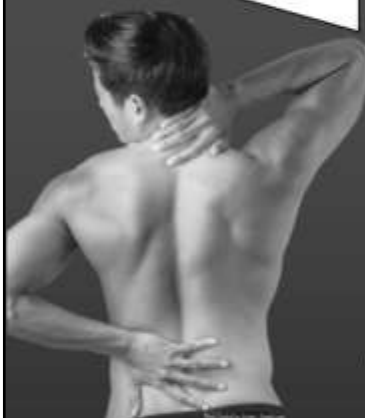
Gill Yusaf



Dr Ehab Georgy



Chris Forsdyke



PHYSIO...WITH A DIFFERENCE

StowHealth
 Violet Hill Rd,
 Stowmarket
 IP14 1NL



Mill Carpets & Flooring

Choose from a wide range of Carpets, Vinyls
Luxury Vinyl Tile (LVT) flooring
In the comfort of your own home,
Supplied & fitted or Supply only

Tel : 01449 677280 or 07747403871

Extremely competitive prices,
Free measuring, advice & quotations
Email: millcarpets1@gmail.com

Painting & Decorating
General Property Maintenance
Window Cleaning & Gutter Clearance
Carpentry and Joinery

STEVE'S HANDYMAN SERVICES

Please call me to discuss your requirements
Fully insured

Steve Mountain
2 Fairfield Cottage, Thorney Green,
Stowupland, Stowmarket, Suffolk, IP14 4AD

07764 373680



A.W SERVICE CENTRE LTD

SMALL INDEPENDENT FAMILY RUN
GARAGE OFFERING GENERAL VEHICLE
SERVICE AND REPAIR

CLUTCHES, CAMBELTS, SERVICING,
BRAKES, SUSPENSION, TYRES,
PRE-MOT CHECKS, ARRANGED MOT'S
VEHICLE COLLECTION AND DROP OFF
AVAILABLE ALONG WITH A
COURTESY CAR

CALL NATHAN:
07990687516 or 01449 672241

APPLEWHITES FARM,
FINNINGHAM ROAD,
OLD NEWTON,
STOWMARKET, IP14 4EU



HOME IMPROVEMENTS
Plumbing • Kitchens • Bathrooms

Local. Reliable. Family-run.

For all your plumbing,
bathroom and kitchen needs
contact David Howard

Call: 07917 003 880 / 01449 672844

Email: enquiries@davethefitter.co.uk

Church View, Haughley, Suffolk



Red House Farm Haughley Self Catering Accommodation Caravan Site (with electric hook-ups)

For more information and bookings contact

Red House Farm, Haughley

Tel 01449 673323

www.RedHouseFarmHaughley.co.uk



Would you like to
advertise
your business?

For advertising rates

contact Anne :

01449 678040 or

haughleynews@btinternet.com

The Old Tea Room
Veterinary Surgery

For a professional caring service

Tel: **01359 241761**

Station Road, Elmswell, IP30 9HA

www.elmswellvets.co.uk



Independent practice with a personal approach



All Aspects of Electrical Works Undertaken

Extra Sockets / Lights
Full / Part Rewires
Consumer Unit Upgrades
Fault Finding & Repairs
Testing & Inspection
All Works Carried Out to Current Regulations
All Works Certified and Guaranteed
Fully Insured
Free Estimates
24 Hour Call Outs

Anthony Allocca

rz.electricalservices@gmail.com

07801990584



R S A PEST MANAGEMENT SERVICES
HAUGHLEY

Tel No: **01449-672083**

Mobile **07745-771516**

GAME OVER

For

**Rats, Mice, Moles, Rabbits, Squirrels, Ants, Wasps, Flies, Birds,
Bees, Cockroaches, Bed bugs, Fleas, Woodworm etc..**

30 year guarantee available on timber treatments, damp proofing

Deer & Fox Management

Fully qualified and insured pest control



For a service you can rely on for effective control of farm, garden and households pests.

Members of National Pest Technicians Association

Unmarked vehicles and discreet service



BOLT

Electrical Services

New Build & Extensions • Electrical Repairs
 Renovation & Rewires
 Consumer Unit Upgrades
 Alterations & Additions • Certification
 EV charge point installation

Chris - 07969 472540
 chris.boltelectrical@gmail.com



DIGITAL

copycentre

For All Your Printing

News letters, Flyers
 Booklets - Magazines
 Plan Prints up to AO size
 B/w, Colour & Scanning
 Order of Services
 Sewing Patterns
 Comb binding
 Laminating

Email: info@digitalcopycentre.co.uk

37 Stowupland Street, Stowmarket, IP14 1EG

01449 678100

CHIMNEY SWEEP

ECO SWEEP CHIMNEY SERVICES

- NEW POWER SWEEPING METHOD USED FOR A MORE THOROUGH CHIMNEY CLEAN THAN BRUSHES
- INDUSTRIAL HEPA FILTERED VACUUM
- FULLY INSURED
- INSURANCE RECOGNIZED CERTIFICATES ISSUED
- SPOTLESS, RELIABLE AND FRIENDLY SERVICE
- ALL CHIMNEYS, WOODBURNERS, AGA, BOILER FLUES SWEPT.
- GUILD OF MASTER SWEEPS CERTIFICATED MEMBER



TEL: 01359 232335

YOU NEED IT? CLARKES HAVE IT!

- > TIMBER SUPPLIES
- > BUILDING MATERIALS
- > GARDENING & LANDSCAPING
- > BESPOKE JOINERY SERVICES
- > TOOLS & HARDWARE
- > AGGREGATES
- > GATES & FENCING



01359 259 259

www.clarkesofwalsham.co.uk

The Street, Walsham-le-Willows, Bury St Edmunds, Suffolk, IP31 3BA



Huge product range including
 Trees – Shrubs – Roses
 Perennials – Alpines
 Bedding plants.
 Composts – Fertilisers
 Garden Furniture
 Water Features – Ornaments
 Large Range of Ceramic Pots
 Tools – Seeds – Bird care
 And lots more

Just off A14 at Junction 49
 Spikes Lane, Stowmarket, Suffolk IP14 3QD
 Tel: 01449 612559
 Email: info@nareys.com
 www.nareys.com



Auto Perfection (EA) Ltd

Unit 9/10, Thurstons Yard,
 Stowmarket Road, Old Newton, IP14 4EE

Servicing, Repairs, Tyres, Exhausts,
 Air Conditioning Re-Gas
 & MOT Testing

To book an appointment **CALL NOW**

01449 612576

A Friendly Local Garage Offering Excellent Service



4 CLEANRIGHT

TRADING LOCALLY FOR OVER 15 YEARS
 CARPET, RUG AND UPHOLSTERY CLEANING SPECIALISTS



DOMESTIC,
 END OF
 TENANCY
 & COMMERCIAL

7 WE
 CLEAN
 DAYS A
 WEEK!

CARPETS Lounge from £30
RUGS From £5
UPHOLSTERY From £25
MATTRESS From £10

Grade 'B' Clean includes:
 Deodorisers, Conditioners and
 High-performance Clean (optional).
 Grade 'A' Clean includes:
 Fabric Protector (optional).

RELIABLE
 PROMPT
 SERVICE

PLEASE CALL US FOR A FREE QUOTE

TEL 01449 711687

4cleanright.co.uk



Proud to be making a difference in our community

Golden Charter
 Funeral Plans

01449 771666

www.stowmarketfunerals.co.uk

The Nutshell
 Milton Road South
 Stowmarket
 IP14 1EZ



WETHERDEN BABY & TODDLER GROUP



We are a friendly group who meet on
Thursday mornings 9.30-11am
during term time at
Wetherden Baptist Church.

We have free play, craft activities, Bible stories, singing time and refreshments.

We ask for a donation of £1 per family per session to cover costs.

See our Wetherden Baby & Toddlers Facebook page for more information.

Ray Goudy Trailer Repairs

HGVs * Trailers * Cars * Vans * Motorhomes
* Horse Boxes * PSVs

- MOT/ATF Station for all Makes/Models
- Service/Repairs to all Makes/Models
- EBS/ABS for all Makes/Model
- HGV/Trailer brake roller testing facility
- HGV Trailer Hire



Plot 1, Tomo Ind Est, Tomo Rd, STOWMARKET, Suffolk, IP14 5AY

For more details phone, email or check out our web site:

Tel: 01449 673989 E Mail: atf@rgtr.co.uk



www.rgtr.co.uk



VOSA Authorised
Testing Facility



FREE ADVICE!

On all your double-glazing enquiries including:

- 'A' energy-rated UPVC windows
- Doors
- Conservatories
- Rainwater goods i.e. fascias, soffits, guttering and downpipes

Removal and full replacement of the above.

All repair work undertaken e.g. sealed units, window/door handles, adjustments to windows/doors

Replace your old polycarbonate conservatory roofs with 'A' rated self-cleaning glass

Enquiries to:

Michael Brame
(Bacton) 01449 781533
Mob. 07931 784470

TankChange Ltd.

Suppliers & Installers of Oil Tanks.

Family Business with Over 40 Years Experience

Steel & Plastic Oil Tanks available

Fully Insured OFTEC Registered Engineers.

Telephone: 01449 781210

Out of hours: 01449 781498

Visit our website @: WWW.TankChange.co.uk

Discounts available to parish magazine readers

PRYKE ELECTRICAL

Tel: 01449 612537

Your local electrical service contractor for expert advice

- Rewiring • New Installation
- Testing and Repair Work
- Electric heating, power, lighting etc.

Unit 5, Glebe Farm
Onehouse, Stowmarket

Email: info@prykeelectrical.co.uk





AP Bowman Decorators Ltd

Professional Decorating Service

Tel: 01473 403137 **Andrew Bowman**
Mob: 07873 760266
andy.bowman27@gmail.com

Quality Decorating Service
Interior & Exterior
Wallpapering

BRIAN DAVISON LANDSCAPING CONTRACTOR

Hard and soft landscaping
Patios, Drives, Paving work
All types of fencing, Sleeper retaining walls
Mini digger work
Tree work and woodchipping
All rubbish cleared
Waste carrier licensed & Fully insured
Local reliable service

Contact Brian at brian_davison@sky.com
mobile 07796 156060
home 01359 241043

JOHN BULL MOTORS LTD

Petrol and Diesel MOT testing,
Servicing, repairs and Diagnostics.

Unit 7B,
Charles Ind. Estate,
Stowmarket, IP14 5AH.

Phone: 01449 774150
Fax: 01449 675898
Email: Johnbullmotors@btconnect.com

Free Collection and Delivery.
Courtesy Car available by prior arrangement.

MARK BUCKLE ELECTRICIAN

J.I.B. REGISTERED
RE-WIRING, EXTRA SOCKETS,
STORAGE HEATING, SHOWERS,
SECURITY LIGHTS

FREE ESTIMATES
NO CALL OUT CHARGE

TELEPHONE 01449 614796
MOBILE 07803 077776

Fed up of running around after your car?

Why not give us the inconvenience – it's part of our service

WE COLLECT AND DELIVER
Servicing, Welding, MOTs arranged
General repairs – shocks, clutches, brakes etc.
Air-conditioning recharged
All work guaranteed

S & P Motogare

Established 1990

Contact: S. Mayhew, Gipping Rd, Stowupland

☎ (01449) 771102 ☎ (07802) 545737 (Mobile)

Personal Service at Competitive Rates!

**Special
cakes
for
special
celebrations**



Jean Barker

01359 241135

www.amazingcakesbyjean.co.uk

DIRECTORY

PLACES OF WORSHIP

Parish Churches of Haughley and Wetherden

Revd Alison Roberts - Curate
revalisonr24@gmail.com
01449 613037

www.achurchnearyou.com
Haughley Ch Warden: Dr J Gibson
Wetherden Ch Wardens: Ann Cooke
& Elizabeth Elbourne

The Baptist Church Wetherden

Minister: Hugh Davis: 01359 242435
Secretary: J W Rushbrook:
01359-240118

United Reformed Church, Stowmarket

The Revd Robert Sheard
Secretary: Anne Scarff:
01449 774792

annescarff11356@btinternet.com

Roman Catholic Church of Our Lady, Stowmarket

Fr. Simon Leworthy 01449 612946

PARISH AND DISTRICT COUNCIL

Haughley Parish Council

Chairman: Gerald Brown
Gerald.brown@haughleypc.co.uk
M: 07969 654520

Clerk: Claire Pizzey,
clerk@haughleypc.co.uk

Wetherden Parish Council

Chairman: Cllr Duncan Perry,
email duncp@live.co.uk
Clerk: Christine Mason: 07545783987
wetherdenparishclerk@gmail.com

District Cllr: Rachel Eburne:
01449-673311

Member of Parliament

Jo Churchill: 0207 2198487

DOCTORS, SCHOOLS, & ESSENTIAL SERVICES

Citizens Advice Bureau:

01449 676060

Haughley Post Office:

01449 676789

Health Centre, Stowmarket

01449-776000

Health Centre, Woolpit :

01359-240298

Health Centre, Mendlesham

(Chapel Rd):01449 767722

Bacton Manor Farm Surgery:

01449-781777

Combs Ford Surgery, Stowmarket

01449-678333

Haughley Crawfords VCP School

01449-673253

Stowupland High School:

01449-674827

Haughley Pre School Playgroup:

07880 738781

Anglian Water: 03457-145-145

British Gas: 0845-609-1122

UK Power Networks: 0800 31 63
105 (power cuts)

Refuse Collection: 0845 606 6067

Wetherden Street lighting:

0800 591055

HALL BOOKINGS

Haughley Village Hall:

Lyn Allum 07837 953266 or email:
lynnallum@hotmail.com

**Maxwell Charnley Community
Room:** booking: 01449 676789

Ron Crascall Pavilion:

Thirza Shaw: trinker@aol.com
or 07786 375441

Haughley Scout Hut:

Richard Stacy 01449 673311

Wetherden Village Hall:

Keith Watts 07528 065250
wetherdenvillagehall@gmail.com or
www.wetherdenvillagehall.com

LOCAL VOLUNTARY CLUBS & ORGANISATIONS

Bellringers Haughley - practice 1st
Mon evening in month

Richard Coe: 07913 588914

Bellringers Wetherden - practice
Tues evening at church:

Basil Hart: 07894555348

Email: MrBHart@hotmail.com

Bowls Club - at George V Playing
Field Haughley:

Tony Offord 07766 216926

Choir Haughley - Thurs evening:
Janet Sheldrake 01449 737247

Mid Suffolk Folk Dance Group:

Ron Coxall Hall 01449 672658

Thursdays Haughley Village Hall
Thursdays 7.30 Wetherden Village
Hall, Margaret/John Doy 01473
742015

H.A.T.S. Haughley Amateur
Theatrical Society:

Lindsey Philpot: 01449 675703 or

Lynne Mahon: 01449 674085

Haughley Art and Crafts:

Julia Brook: 01449 763994

Haughley Football Club:

Ian Wilkinson 07802 647674

or Lee Forsdyke 07472 902302

Haughley History & Parish Archive:

Kieron Palmer: 07583081797

Haughley Hoofers Clog Dancers:

practice Sunday 7.30 at Village Hall,
Gill Brett: 01449-673518

Haughley IT Squad:

haughleyhitsquad@gmail.com

Haughley Parish in Bloom:(HPIB)

Alison Pepper: 07714 415148

alison.pepper@haughleypc.co.uk

Yvonne Tricker: 07415 230088

yvonne.tricker@haughleypc.co.uk

Haughley Royal British Legion:

Branch Chairman:

Tim Hart 01449 613680

**Haughley Singing for Wellbeing
Group**

Lynn Elliston, 07979832980

Haughley and Wetherden

Twinning Association:

Chairman, Roger Tricker

01359 242904

Email: roger@tricker.co.uk

Wetherden Baby & Toddler Group

Sarah Chukwu: 01449 674101

slchukwu37@gmail.com

**1st Wetherden & Haughley Scout
Group:** Group Scout Leader:

Catherine Winter 01449 781372

catherine.winter@outlook.com

Wetherden FC - Jonathan Lewis

(Manager) 01449-678234 or Trudy

Hooper (Secretary): 01842-754170

Wetherden History Group:

Pat Tuffin 01359 240396.

Wetherden Table Tennis Club:

Dawn Gibson 01359 240 259

Wetherden Tennis Club:

Sonia Jewers: 07900 272877

wetherdentc@gmail.com, or

Graham Hughes: 07807 553943

Whist Drive - monthly, Wetherden
Village Hall:

James Rand 07972 633518

WI Haughley - 1st Wed in month,
7.30pm, in Haughley Village Hall:

Jane Thompson: 01449 677079

HAUGHLEY & WETHERDEN

PARISH NEWS

Editorial/Advertising Copy: Anne

Ardley 01449 678040 or email:

haughleynews@btinternet.com

Copy Assistant: Elizabeth Ardley-

Walker

Treasurer– David Bryant

Printing - Digital Copy Centre

01449 678100

H&WPN website: <https://>

www.haughley.org.uk/

**All details correct at time of
printing.
Please inform Editor of any
changes ASAP.**

Eastern Frames

Your Local, Professional Picture Framers
Framing • Photo Printing • Greetings Cards



Needlework Framing Experts
Fast & Reliable Service
Station Rd Haughley IP14 3QP
Tel. 01449 675897
www.EasternFrames.co.uk
Mon-Fri 9am-5pm Sat 9am-12noon

Would you like to
advertise
your business?

For advertising rates
contact Anne :
01449 678040 or
haughleynews@btinternet.com

JAY NICHOLLS & CO.
SPECIALISTS IN
PERIOD PROPERTY
RESTORATION
*renovation work, all repairs,
alterations, conversions,
roofing, decoration etc.*

Quality Work Guaranteed

01449 781375
07804957190

Complete Building Service

DISTRIBUTION & DELIVERY

We aim to deliver your copy to your door by the 1st of the month in all weathers. Occasionally we experience circumstances which delay printing and delivery. If you haven't received your copy by the 2nd of the month, please contact:

David Bryant on:
01449 774657 or email
dlbryant@btinternet.com.

Due to the nature of the Parish News we are unable to publish 'letters to the Editor' and whilst we take every care in ensuring that all the information supplied by the deadline is included, we take no responsibility for the content of articles. All adverts are placed in good faith and the H&WPN cannot be held responsible for any work carried out.

MAIN HALL

- Tables & Chairs to seat 100
- Seats 150 for Close Audience
- The hall is fully heated, with blackout blinds and a new solid beech wood floor
- Access to toilets including disabled
- Door to enclosed garden
- Staging available

Suitable for :

- *Wedding Receptions
- *Parties
- *Private meetings
- *Dances
- *Classes

AVAILABLE FOR
HIRE
HAUGHLEY
VILLAGE HALL

GREEN ROOM

- Tables & Chairs to seat 40
- Hard Floor
- French windows to enclosed garden
- Own kitchenette equipped with microwave, kettle and crockery
- Disabled toilet

To Hire Contact:

Lynn Allum
07837953266

lynnallum@
Hotmail.com

*We currently have an Introductory Offer rate for new local groups

THE OLD READING ROOM

- Tables & chairs to seat 30
- Access to enclosed garden
- Wood Floor
- Black Out Blinds

EXTRA FACILITIES AVAILABLE TO ALL ROOMS

- Free WiFi
- Fully equipped kitchen with oven/hob, 2 large fridges, large hot cabinet, tea urn
- Crockery place settings for 100
- Glasses
- Portable PA system
- Projector & screen



Lamberts Service Station Ltd

www.lambertsservicestationltd.com Email : lamberts.1@btconnect.com

Shop Green, Bacton, Stowmarket, IP14 4LG, Tel: 01449 781260

Mobile: 07834 778116

Car Service, MOT Testing and Repairs

Please visit our website for full list of services.

WORKSHOP

Service all Makes and Models
Air Conditioning
Engine Diagnostics
Fault Finding
Engine Management Lights
Exhausts
ABS

ITEMS STOCKED

Tyres
Batteries
Wiper Blades
Bulbs
Calor Gas

MOT TESTING

MOTS while you wait - By Appointment
Petrol
Diesel
Electric
Hybrids

RECOVERY SERVICE

Home Starts
Breakdown
Accident Recovery

BODYSHOP

Accident Work
Body Work Repairs
Paint Work
Re-Sprays
Welding

FORECOURT SERVICES

Petrol and Diesel
Tyre Pressure and Levels
Checked
Bulbs Fitted While You Wait
Antifreeze Check

Competitive prices on Tyres - Quotes given
Free no obligation Estimates on work needed



Find us on Facebook - www.facebook.com/lambertsservicestation



Fox & Co Jewellers of Stowmarket

A traditional Jewellers with a modern touch

🕒 **Specialists in Diamond Jewellery**

🕒 **Gold & Silver Jewellery • Watches & Giftware**

🕒 **Over 2000 Wedding Ring designs**

🕒 **Watch Batteries & Straps Professionally fitted from £3.95**

🕒 **High Prices paid for Gold & Silver!**

🕒 **Second Hand Jewellery • Great Value Jewellery Repairs**



www.foxandcojewellers.com

Tel: 01449 616333

60 Ipswich Street, Stowmarket IP14 1AD (Opposite the Oak Public House)